

## HOWTO: Installation of Microsoft Office SharePoint Server 2007

<b>PREREQUISITES.....</b>	<b>2</b>
<b>STEP -1: DO I NEED AN ACTIVE DIRECTORY .....</b>	<b>2</b>
<b>STEP 0: INSTALL OS, INCLUDING ALL SERVICE PACKS AND PATCHES .....</b>	<b>2</b>
<b>STEP 1: CREATE REQUIRED SERVICE ACCOUNTS.....</b>	<b>3</b>
<b>STEP 2: CREATE DNS HOSTNAMES .....</b>	<b>3</b>
<b>STEP 3: INSTALL IIS + ASP.NET .....</b>	<b>3</b>
<b>STEP 4: INSTALL SQL SERVER .....</b>	<b>4</b>
<b>STEP 5: INSTALL SQL 2005 SP2.....</b>	<b>9</b>
<b>STEP 6: INSTALL .NET FRAMEWORK 3.0 .....</b>	<b>14</b>
<b>STEP 7: INSTALL MOSS2007.....</b>	<b>15</b>
<b>STEP 8: RUN THE MOSS2007 CONFIGURATION WIZARD.....</b>	<b>19</b>
<b>STEP 9: CONFIGURE THE MOSS2007 SERVER FARM .....</b>	<b>21</b>
<b>STEP 10: CREATE WEB APPLICATION FOR PORTAL .....</b>	<b>36</b>
<b>STEP 11: INSTALL .NET FRAMEWORK PATCHES .....</b>	<b>41</b>
<b>STEP 12: INSTALL PUBLIC UPDATE OF OCTOBER 9TH.....</b>	<b>42</b>
<b>STEP 13: CONFIGURE PDF ICON .....</b>	<b>42</b>
<b>STEP 14: INSTALL PDF IFILTER AND CONFIGURE INDEXED FILE TYPES .....</b>	<b>43</b>
<b>STEP 15: GRANT SERVICE ACCOUNTS PERMISSIONS TO DCOM OBJECTS .....</b>	<b>43</b>
<b>STEP 16: CONFIGURE PROFILE IMPORT SCHEDULE .....</b>	<b>44</b>
<b>STEP 17: CONFIGURE INDEXING SCHEDULE.....</b>	<b>45</b>
<b>STEP 18: CHANGE MYSITE SETTINGS.....</b>	<b>46</b>
<b>STEP 19: WINDOWS UPDATE.....</b>	<b>46</b>

### Change log:

Version	Date	Editor	Description
1.0	March 6 <sup>th</sup> 2007	Yorick Kuijs	First version
1.5	July 27 <sup>th</sup> 2007	Yorick Kuijs	Corrected error, updated to SQL SP2 and added extra customizations
1.6	November 23 <sup>rd</sup> 2007	Yorick Kuijs	Added extra configuration steps and installation of Public Update of October 9th

## Prerequisites

- Windows Server 2003/ Windows Server 2003 R2
  - Any edition will do, but with web edition functionality is limited
- Internet Information Server 6 (IIS6)
- .NET Framework 3.0
- SQL Server 2000 SP4 or SQL Server 2005 SP2 (Recommended)
- Active Directory (if you want to create a server farm)
- 1 Service account for SQL Server
- 6 Service accounts for SharePoint:
  - Configuration database account
  - Search service account
  - Index service account
  - Shared service provider account
  - Shared service provider Web application account
  - Web application account

**NOTE: Perform installation using a user account which has administrative privileges.**

## Step -1: Do I need an Active Directory

Microsoft Office SharePoint Server 2007 only requires an Active Directory when you use more than one server. The servers then need to communicate with each other using central user accounts.

When you are just installing one server, an Active Directory is not required. All accounts can be created on the local server. When installing a server in a corporate network, often an Active Directory is already present. If so, create the accounts in the Active Directory. This ensures that MOSS2007 has access to the Active Directory if you want to use profile import.

So if you are creating a single server farm installation in (for example) Virtual PC, you do not need an Active Directory. But if you want to use one of the following functionalities you do need to configure an Active Directory:

- Use Profile Import.
- Install Microsoft Exchange to be able to send alerts.

## Step 0: Install OS, including all Service Packs and patches

NOTE: SQL Server 2005 requires Windows Server 2003 SP1

## Step 1: Create required Service Accounts

The required accounts can be configured as regular Domain Users.

Account name	Purpose
sa_MOSS2007	MOSS Configuration Database Account
sa_MOSS2007Crawl	MOSS Content Access Account
sa_MOSS2007Search	MOSS Search Account
sa_MOSS2007SQL	MOSS SQL Service Account
sa_MOSS2007SSP	MOSS Shared Services Provider Account
sa_MOSS2007SSPwebapp	MOSS Shared Services Provider Web Application Account
sa_MOSS2007webapp	MOSS Web Application Account

## Step 2: Create DNS hostnames

- If you have a DNS infrastructure (when in corporate network or with Active Directory present), you have to create DNS hostnames.
- If you do not have a DNS infrastructure, you have to create the hostnames in the local hosts file.

Host name	Purpose
shareservices.<domainname>	Hosts MOSS2007 Shared Services
mysite.<domainname>	Hosts MySites
portal.<domainname>	Hosts a portal
teamsite.<domainname>	Hosts teamsites

In the DNS: All hostnames are CNAMEs (Canonical Names or Aliases) of the MOSS web server.

## Step 3: Install IIS + ASP.NET


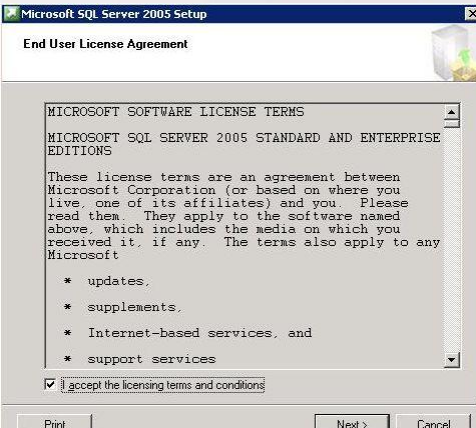
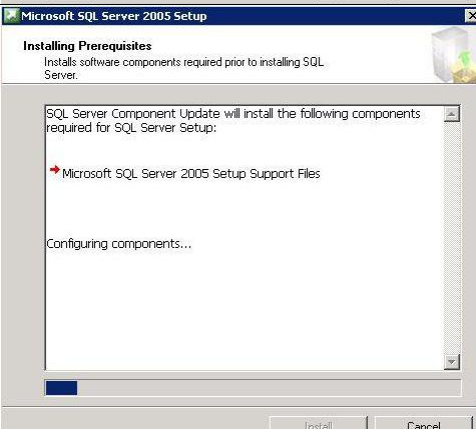
Start > Settings > Control Panel > Add/Remove Programs > Add/Remove Windows Components or use script which you can download from:

<http://www.xs4all.nl/~ykuijs/iis6inst.zip>

This script will install IIS 6 and place the InetPub directory on the D drive, something you cannot do via the GUI.

## Step 4: Install SQL Server

SQL Server 2005 will be used. This requires Windows Server 2003 Service Pack 1 to be installed. Install this Service Pack and all missing patches.

Step	
<p>Start the installation by placing the DVD into the DVD drive. The splash screen will start.</p> <p>Click "Server components, tools, Books Online and samples" under "Install".</p>	 <p>The screenshot shows the 'Start' screen of the SQL Server 2005 installation. It features a central graphic of an open box with a green arrow pointing to the right. To the right of the graphic, there are three main sections: 'Prepare' with links for 'Review hardware and software requirements', 'Read the release notes', and 'Install SQL Server Upgrade Advisor'; 'Install' with a link for 'Server components, tools, Books Online, and samples' and a note to 'Run the SQL Native Client Installation Wizard'; and 'Other Information' with links for 'Browse this CD', 'Visit the SQL Server website', and 'Read the SQL Server license agreement'. An 'Exit' button is located in the bottom right corner.</p>
<p>Accept the license agreement and click "Next".</p>	 <p>The screenshot shows the 'End User License Agreement' window. The title bar reads 'Microsoft SQL Server 2005 Setup'. The main content area contains the 'MICROSOFT SOFTWARE LICENSE TERMS' for 'MICROSOFT SQL SERVER 2005 STANDARD AND ENTERPRISE EDITIONS'. The text explains that these terms are an agreement between Microsoft Corporation and the user. A list of terms includes updates, supplements, Internet-based services, and support services. At the bottom, there is a checkbox labeled 'I accept the licensing terms and conditions' which is checked. 'Print', 'Next &gt;', and 'Cancel' buttons are visible at the bottom of the window.</p>
<p>Setup will install some required components.</p>	 <p>The screenshot shows the 'Installing Prerequisites' window. The title bar reads 'Microsoft SQL Server 2005 Setup'. The main content area states: 'SQL Server Component Update will install the following components required for SQL Server Setup:'. Below this, there is a list with one item: 'Microsoft SQL Server 2005 Setup Support Files'. At the bottom, it says 'Configuring components...' and shows a progress bar. 'Install' and 'Cancel' buttons are at the bottom right.</p>

<p>Click "Next"</p>																																		
<p>Setup will perform a system configuration check.</p> <p>When finished, see if any major errors are found. If not, click "Next"</p>	<table border="1"> <thead> <tr> <th>Success</th> <th>14 Total</th> <th>0 Error</th> </tr> </thead> <tbody> <tr> <td>14 Success</td> <td></td> <td>0 Warning</td> </tr> </tbody> </table> <table border="1"> <thead> <tr> <th>Action</th> <th>Status</th> <th>Message</th> </tr> </thead> <tbody> <tr><td>IIS Feature Requirement</td><td>Success</td><td></td></tr> <tr><td>Pending Reboot Requirement</td><td>Success</td><td></td></tr> <tr><td>Performance Monitor Counter Require...</td><td>Success</td><td></td></tr> <tr><td>Default Installation Path Permission Re...</td><td>Success</td><td></td></tr> <tr><td>Internet Explorer Requirement</td><td>Success</td><td></td></tr> <tr><td>CDM Plus Catalog Requirement</td><td>Success</td><td></td></tr> <tr><td>ASP.Net Version Registration Require...</td><td>Success</td><td></td></tr> <tr><td>Minimum MDAC Version Requirement</td><td>Success</td><td></td></tr> </tbody> </table>	Success	14 Total	0 Error	14 Success		0 Warning	Action	Status	Message	IIS Feature Requirement	Success		Pending Reboot Requirement	Success		Performance Monitor Counter Require...	Success		Default Installation Path Permission Re...	Success		Internet Explorer Requirement	Success		CDM Plus Catalog Requirement	Success		ASP.Net Version Registration Require...	Success		Minimum MDAC Version Requirement	Success	
Success	14 Total	0 Error																																
14 Success		0 Warning																																
Action	Status	Message																																
IIS Feature Requirement	Success																																	
Pending Reboot Requirement	Success																																	
Performance Monitor Counter Require...	Success																																	
Default Installation Path Permission Re...	Success																																	
Internet Explorer Requirement	Success																																	
CDM Plus Catalog Requirement	Success																																	
ASP.Net Version Registration Require...	Success																																	
Minimum MDAC Version Requirement	Success																																	
<p>Setup will perform some more checks</p>																																		

<p>Enter Name and Company</p>	
<p>On the “Components to Install”, click “Advanced”</p>	
<p>On the Feature selection page, select the following components:</p> <ul style="list-style-type: none"> <li>- Database Services <ul style="list-style-type: none"> <li>o Data Files</li> <li>o Shared Tools</li> </ul> </li> <li>- Reporting Services <ul style="list-style-type: none"> <li>o Report Manager</li> <li>o Shared Tools</li> </ul> </li> <li>- Client Components <ul style="list-style-type: none"> <li>o Connectivity Components</li> <li>o Management Tools</li> </ul> </li> </ul> <p>Change the installation path for the Data Files to D:\Program Files\Microsoft SQL Server\ by clicking “Browse” and changing the default path.</p> <p>Click “Next”</p>	



<p>Install Default Instance</p> <p>Click "Next"</p>	
<p>Enter the credentials for the SQL service account and select the checkbox SQL Server Agent.</p> <p>Click "Next"</p>	
<p>Leave "Authentication Mode" default and click "Next"</p>	
<p>IMPORTANT: Select collation as:</p> <ul style="list-style-type: none"> <li>- Latin1_General</li> <li>- Accent - sensitive</li> <li>- Kana - sensitive</li> <li>- Width - sensitive</li> </ul> <p>Click "Next"</p>	

<p>Leave "Report Server Installation Options" default and click "Next"</p>	
<p>If you like to send error reports to Microsoft, select the appropriate options and click "Next"</p>	
<p>Review the displayed options and click "Install" if ok.</p>	
<p>Setup will start installing SQL Server 2005.</p>	

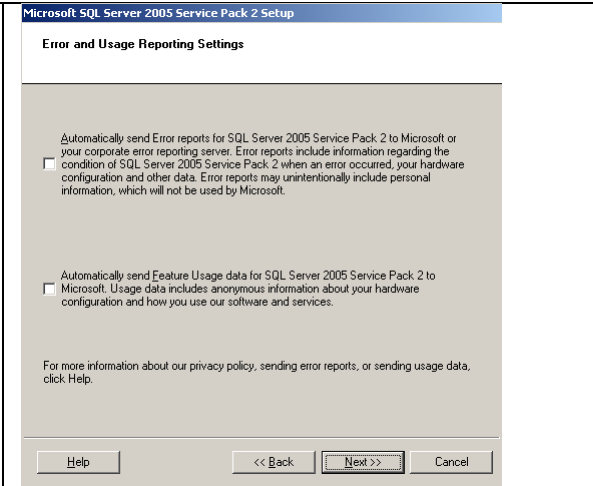
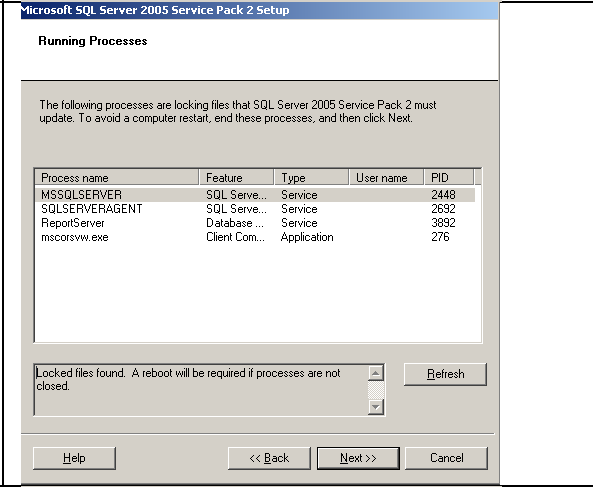
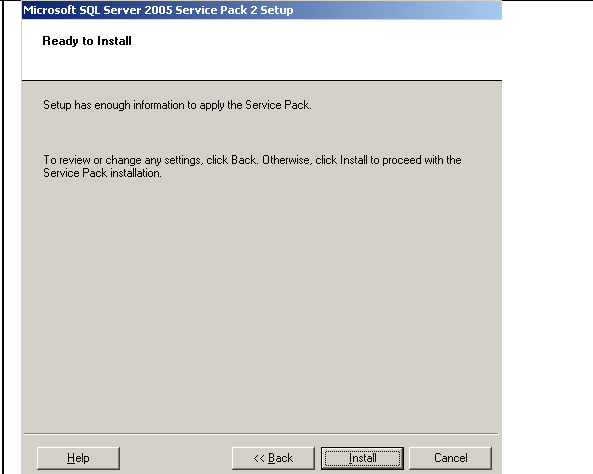


<p>If finished, click "Next"</p>	<table border="1"> <thead> <tr> <th>Product</th> <th>Status</th> </tr> </thead> <tbody> <tr><td>SQL Setup Support Files</td><td>Setup finished</td></tr> <tr><td>SQL Native Client</td><td>Setup finished</td></tr> <tr><td>SQL VSS Writer</td><td>Setup finished</td></tr> <tr><td>gWCI11</td><td>Setup finished</td></tr> <tr><td>SQL Server Backward-Compatibility Files</td><td>Setup finished</td></tr> <tr><td>SQL Server Database Services</td><td>Setup finished</td></tr> <tr><td>Reporting Services</td><td>Setup finished</td></tr> <tr><td>Workstation Components, Books Onlin...</td><td>Setup finished</td></tr> </tbody> </table>	Product	Status	SQL Setup Support Files	Setup finished	SQL Native Client	Setup finished	SQL VSS Writer	Setup finished	gWCI11	Setup finished	SQL Server Backward-Compatibility Files	Setup finished	SQL Server Database Services	Setup finished	Reporting Services	Setup finished	Workstation Components, Books Onlin...	Setup finished
Product	Status																		
SQL Setup Support Files	Setup finished																		
SQL Native Client	Setup finished																		
SQL VSS Writer	Setup finished																		
gWCI11	Setup finished																		
SQL Server Backward-Compatibility Files	Setup finished																		
SQL Server Database Services	Setup finished																		
Reporting Services	Setup finished																		
Workstation Components, Books Onlin...	Setup finished																		
<p>Click "Finish"</p>																			

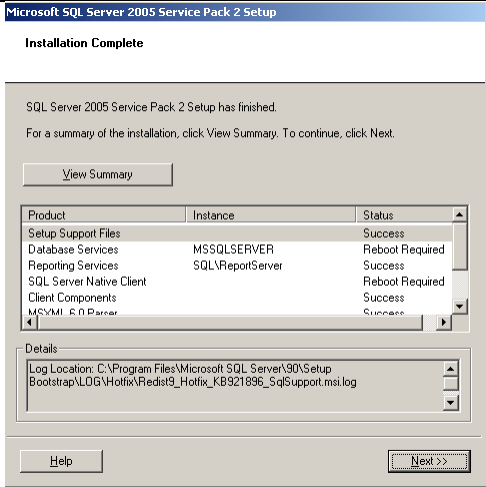
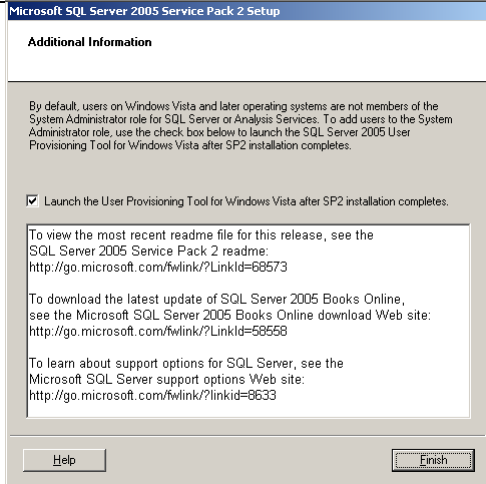
## Step 5: Install SQL 2005 SP2

Step	
<p>Start the setup package</p>	



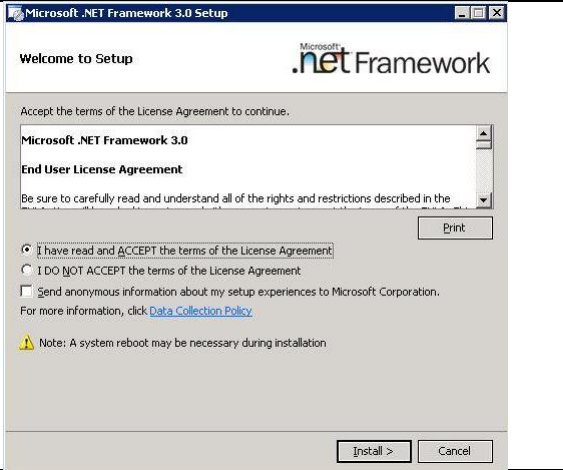
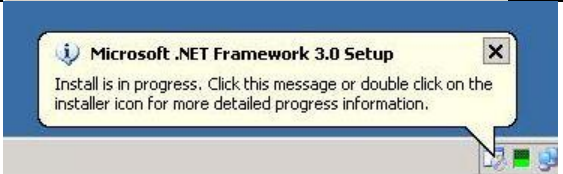
<p>Select the checkbox "I accept the licensing terms and conditions" and click "Next"</p>		
<p>Accept the default settings and click "Next"</p>		
<p>Accept the default settings and click "Next"</p>		

<p>Accept the default settings and click "Next"</p>	 <p>The screenshot shows the 'Error and Usage Reporting Settings' dialog box. It contains two unchecked checkboxes: 'Automatically send Error reports for SQL Server 2005 Service Pack 2 to Microsoft or your corporate error reporting server...' and 'Automatically send Feature Usage data for SQL Server 2005 Service Pack 2 to Microsoft...'. The 'Next &gt;&gt;' button is highlighted.</p>
<p>Close all programs which are locking files to prevent a reboot or continue and reboot after installation.</p> <p>Click "Next"</p>	 <p>The screenshot shows the 'Running Processes' dialog box. It lists processes locking files: MSSQLSERVER (PID 2448), SQLSERVERAGENT (PID 2632), ReportServer (PID 3032), and mscorsvnt.exe (PID 276). A 'Refresh' button is visible. The 'Next &gt;&gt;' button is highlighted.</p>
<p>Click "Install"</p>	 <p>The screenshot shows the 'Ready to Install' dialog box. It states 'Setup has enough information to apply the Service Pack.' and 'To review or change any settings, click Back. Otherwise, click Install to proceed with the Service Pack installation.' The 'Install' button is highlighted.</p>

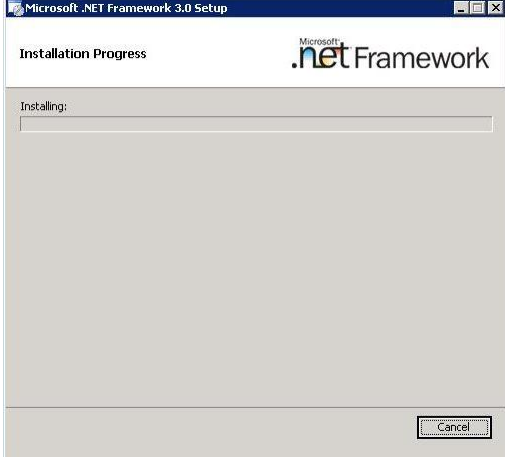
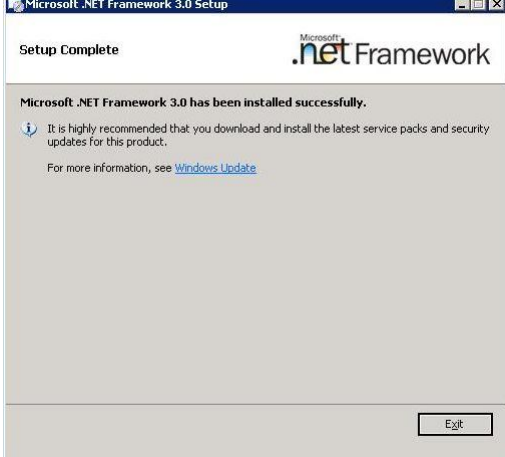
<p>Installation will start.</p>	
<p>This error might occur, indicating that files are in use and a reboot must be performed after install. Click "Yes" to proceed.</p>	
<p>After installation, the message "One or more affected files have operations pending. You should restart your computer to complete the process.". Press Ok.</p>	
<p>Click "Next"</p>	

<p>Click "Next"</p>	 <p><b>Microsoft SQL Server 2005 Service Pack 2 Setup</b></p> <p><b>Installation Complete</b></p> <p>SQL Server 2005 Service Pack 2 Setup has finished. For a summary of the installation, click View Summary. To continue, click Next.</p> <p><input type="button" value="View Summary"/></p> <table border="1"> <thead> <tr> <th>Product</th> <th>Instance</th> <th>Status</th> </tr> </thead> <tbody> <tr> <td>Setup Support Files</td> <td></td> <td>Success</td> </tr> <tr> <td>Database Services</td> <td>MSSQLSERVER</td> <td>Reboot Required</td> </tr> <tr> <td>Reporting Services</td> <td>SQL\ReportServer</td> <td>Success</td> </tr> <tr> <td>SQL Server Native Client</td> <td></td> <td>Reboot Required</td> </tr> <tr> <td>Client Components</td> <td></td> <td>Success</td> </tr> <tr> <td>MSXML 6.0 Parser</td> <td></td> <td>Success</td> </tr> </tbody> </table> <p>Details: Log Location: C:\Program Files\Microsoft SQL Server\90\Setup Bootstrap\LOG\Hotfix\Redist9_Hotfix_KB921896_SqlSupport.msi.log</p> <p><input type="button" value="Help"/> <input type="button" value="Next &gt;&gt;"/></p>	Product	Instance	Status	Setup Support Files		Success	Database Services	MSSQLSERVER	Reboot Required	Reporting Services	SQL\ReportServer	Success	SQL Server Native Client		Reboot Required	Client Components		Success	MSXML 6.0 Parser		Success
Product	Instance	Status																				
Setup Support Files		Success																				
Database Services	MSSQLSERVER	Reboot Required																				
Reporting Services	SQL\ReportServer	Success																				
SQL Server Native Client		Reboot Required																				
Client Components		Success																				
MSXML 6.0 Parser		Success																				
<p>Click "Finish" and reboot the server.</p>	 <p><b>Microsoft SQL Server 2005 Service Pack 2 Setup</b></p> <p><b>Additional Information</b></p> <p>By default, users on Windows Vista and later operating systems are not members of the System Administrator role for SQL Server or Analysis Services. To add users to the System Administrator role, use the check box below to launch the SQL Server 2005 User Provisioning Tool for Windows Vista after SP2 installation completes.</p> <p><input checked="" type="checkbox"/> Launch the User Provisioning Tool for Windows Vista after SP2 installation completes.</p> <p>To view the most recent readme file for this release, see the SQL Server 2005 Service Pack 2 readme: <a href="http://go.microsoft.com/fwlink/?Linkid=68573">http://go.microsoft.com/fwlink/?Linkid=68573</a></p> <p>To download the latest update of SQL Server 2005 Books Online, see the Microsoft SQL Server 2005 Books Online download Web site: <a href="http://go.microsoft.com/fwlink/?Linkid=58558">http://go.microsoft.com/fwlink/?Linkid=58558</a></p> <p>To learn about support options for SQL Server, see the Microsoft SQL Server support options Web site: <a href="http://go.microsoft.com/fwlink/?linkid=8633">http://go.microsoft.com/fwlink/?linkid=8633</a></p> <p><input type="button" value="Help"/> <input type="button" value="Finish"/></p>																					

## Step 6: Install .NET Framework 3.0

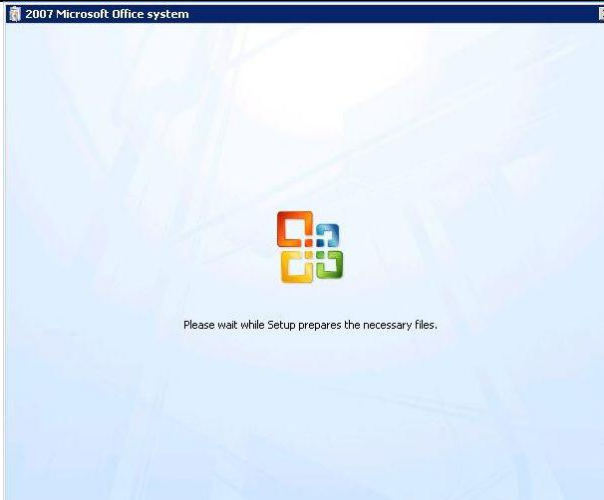
Step	
<p>Download the .Net Framework 3.0 from the Microsoft site.</p> <p>x86 version (32 bit):  <a href="http://go.microsoft.com/fwlink/?LinkId=70848">http://go.microsoft.com/fwlink/?LinkId=70848</a></p> <p>x64 version (64 bit):  <a href="http://go.microsoft.com/fwlink/?LinkId=70849">http://go.microsoft.com/fwlink/?LinkId=70849</a></p>	
<p>Start the dotnetfx3.exe file you have just downloaded. Click "Run"</p>	
<p>Setup starts loading installation components.</p>	
<p>Read and accept the license agreement and click "Install"</p>	
<p>The setup minimizes to the system tray and a balloon pops up. Click the balloon to monitor the installation.</p>	



<p>Setup proceeds the installation</p>	 <p>The screenshot shows the 'Microsoft .NET Framework 3.0 Setup' window. The title bar reads 'Microsoft .NET Framework 3.0 Setup'. The main content area is titled 'Installation Progress' and features the Microsoft .NET Framework logo. Below the logo, there is a progress bar and the text 'Installing:'. At the bottom right, there is a 'Cancel' button.</p>
<p>After installation, click "Exit"</p>	 <p>The screenshot shows the 'Microsoft .NET Framework 3.0 Setup' window. The title bar reads 'Microsoft .NET Framework 3.0 Setup'. The main content area is titled 'Setup Complete' and features the Microsoft .NET Framework logo. Below the logo, the text reads: 'Microsoft .NET Framework 3.0 has been installed successfully.' It also includes a message: 'It is highly recommended that you download and install the latest service packs and security updates for this product.' with a link to 'Windows Update'. At the bottom right, there is an 'Exit' button.</p>

## Step 7: Install MOSS2007

You are now ready to install Microsoft Office SharePoint Server 2007

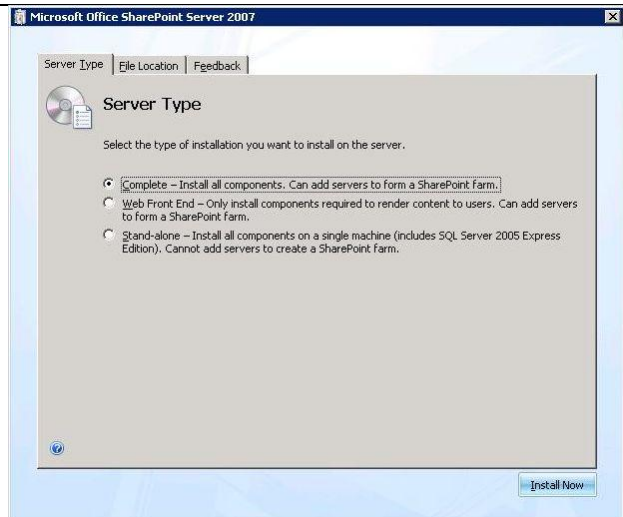
Step	
<p>Start installation</p>	 <p>The screenshot shows the '2007 Microsoft Office system' installation window. The title bar reads '2007 Microsoft Office system'. The background is a light blue abstract pattern. In the center, there is the Microsoft Office logo (four colored squares) and the text: 'Please wait while Setup prepares the necessary files.'</p>

<p>Enter the Product Key</p>	
<p>Read and accept the License Agreement and click "Continue".</p>	
<p>Click "Advanced" to install Office SharePoint Server 2007 using custom settings.</p> <p>NOTE: Basic install uses SQL Express and default settings. If you want to use SQL Server 2005 Standard/Enterprise or do not want to use default settings, choose Advanced.</p>	

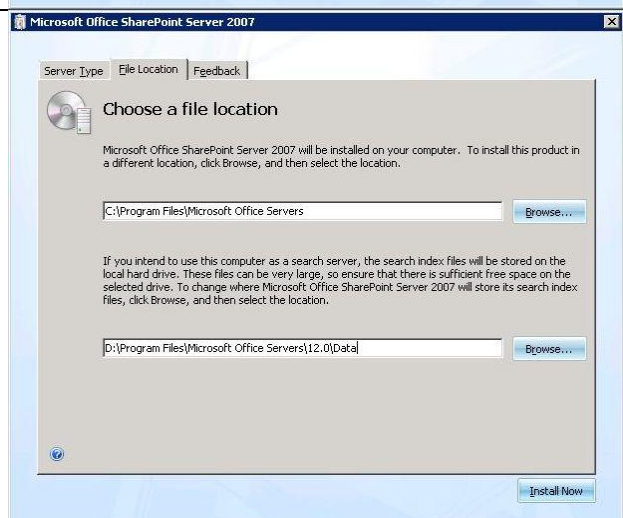
Choose "Complete" as the "Server Type".

NOTE: Differences between settings:

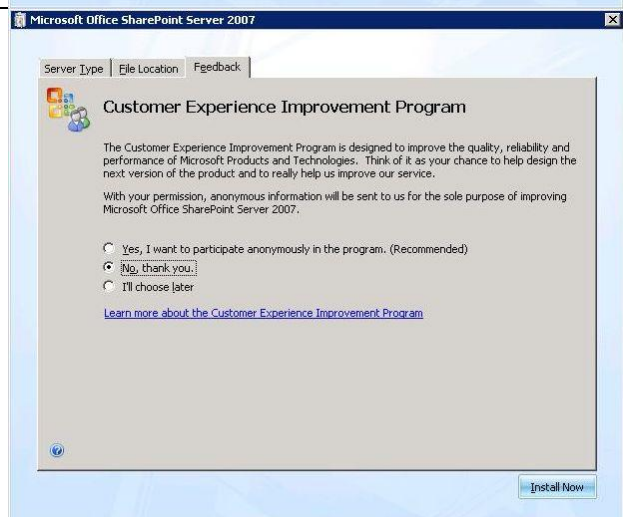
- Complete will install all Office SharePoint Server 2007 binaries on the server.
- Web Front End will install only the binaries needed for the web server role. It is not possible to run any other roles that web server on this server.
- Stand-alone will install all binaries and SQL Server 2005 Express Edition.



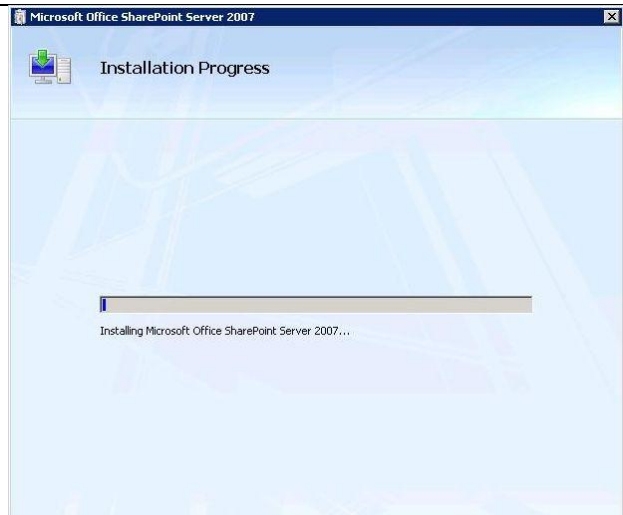
Change the Data directory (bottom setting) to "D:\Program Files\Microsoft Office Server\12\Data"



Select if you want to participate in the "Customer Experience Improvement Program" and click "Install Now"

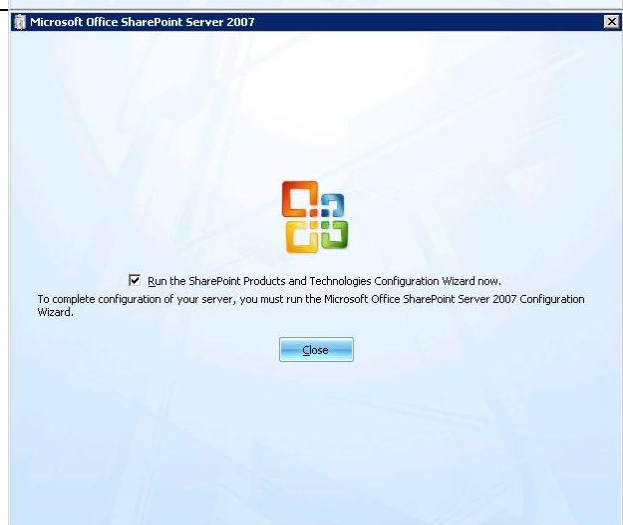


Setup will now install Microsoft Office SharePoint Server 2007.


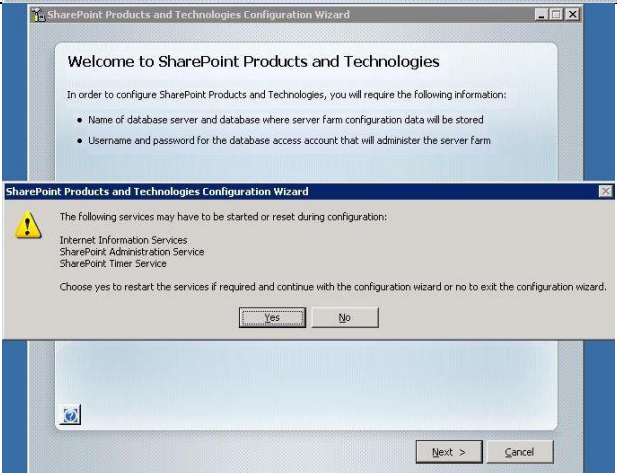
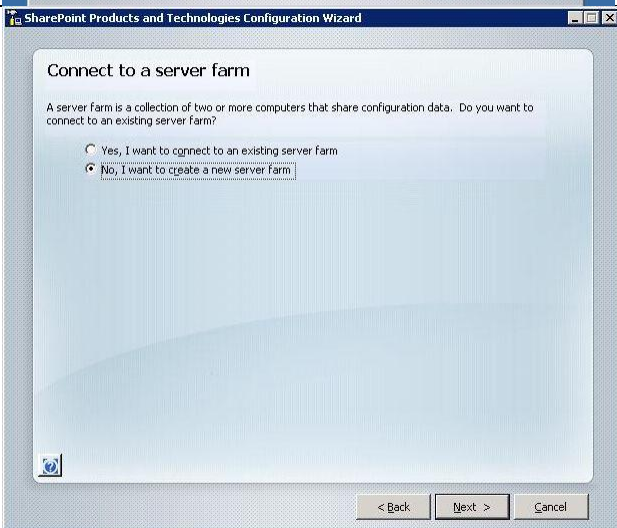


After install, setup asks if you want to proceed with configuring the just installed MOSS installation.

Click "Close"



## Step 8: Run the MOSS2007 Configuration Wizard

Step	
<p>The "SharePoint Products and Technologies Configuration Wizard" starts. Click "Next"</p>	
<p>A message is shown which states that several services will be restarted during configuration. Click "Yes"</p>	
<p>We would like to create a new farm. Select "No, I want to create a new server farm" and click "Next"</p> <p>NOTE: If this is not the first server in the farm, select "Yes, I want to connect to an existing server farm" and select the configuration database.</p>	

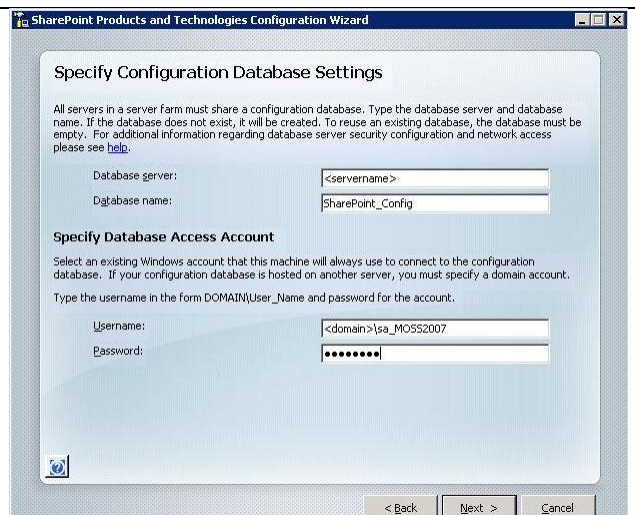


Enter the following information in the “Specify Configuration Database Settings” page:

- Database server: database server name
- Database name: Can leave default (“Sharepoint\_Config”)

At “Specify Database Access Account” enter the Configuration Database account:


- Username: <domain>\SA\_MOSS2007
- Password: <password>



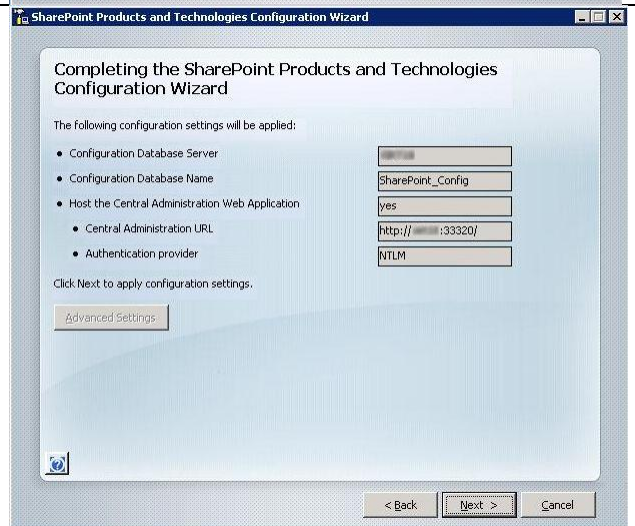
On the “Configure Sharepoint Central Administration Web Application” page leave everything default and click “Next”.

NOTE: If you want the Central Admin to be configured on a certain port, select the “Specify port number” box and enter the desired port.

NOTE 2: Default authentication provider is NTLM. This is the easiest to configure, but causes more load on Domain controllers. Kerberos requires extra configuration.



Review settings and click “Next” to start configuration.





The wizard starts the configuration.



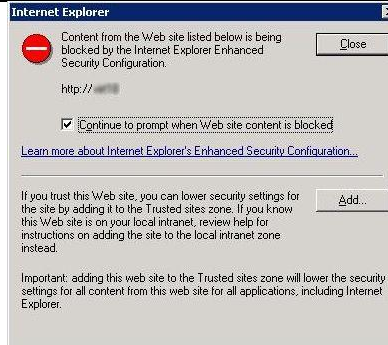
After the configuration is finished click "Finished".



## Step 9: Configure the MOSS2007 server farm

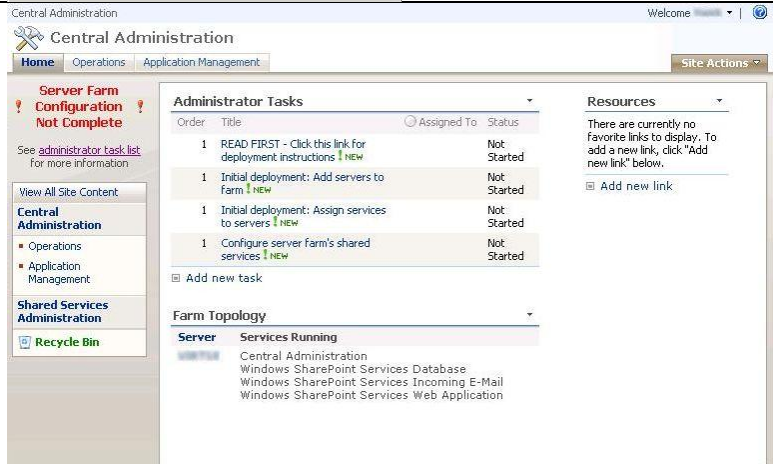
Step	
<p>After clicking "Finished", setup opens the Central Administration page. You have to log into this page using credentials which have Administrator privileges.</p>	

If the server has “Internet Explorer Enhanced Security Configuration” enabled, this message will be show. Add the admin site to the Trusted Sites zone by clicking the “Add” button.

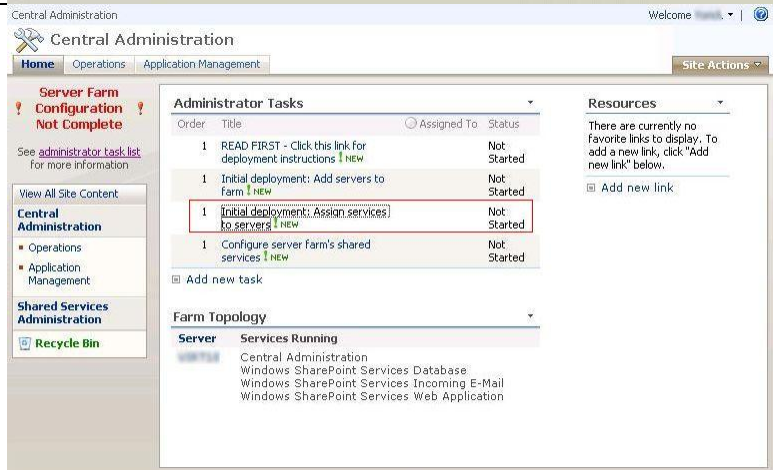


The Central Administration site is opened.

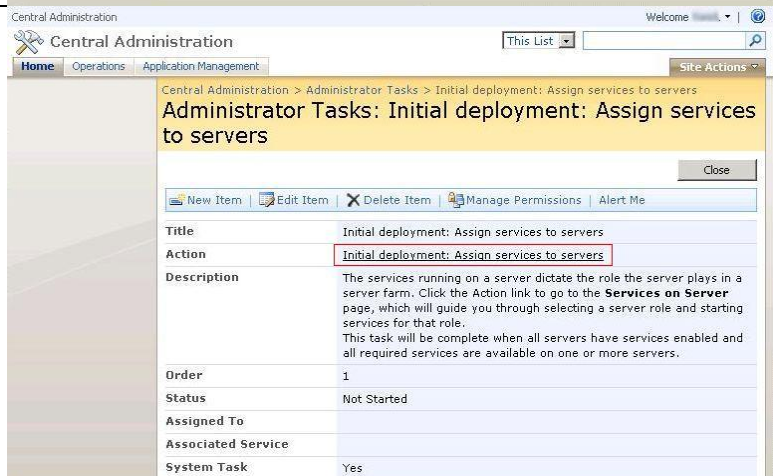
In the “Administrative Tasks” four tasks are shown. The first is just a readme. The second task states that more servers must be added to the farm (if necessary) before continuing with the next step.



In this scenario we choose the third step “Initial Deployment: Assign services to servers”

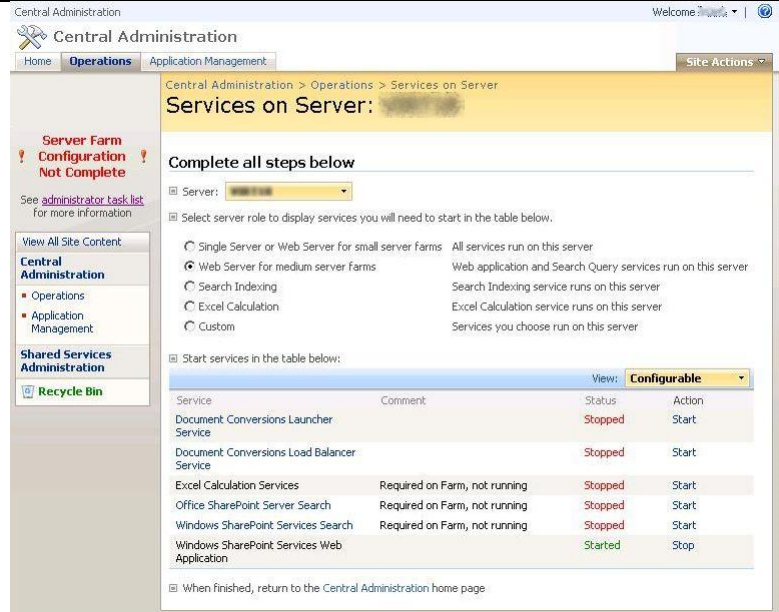


Click the link behind “Action” to start the task.



All available services are show and depending on the role of the server you can start services.

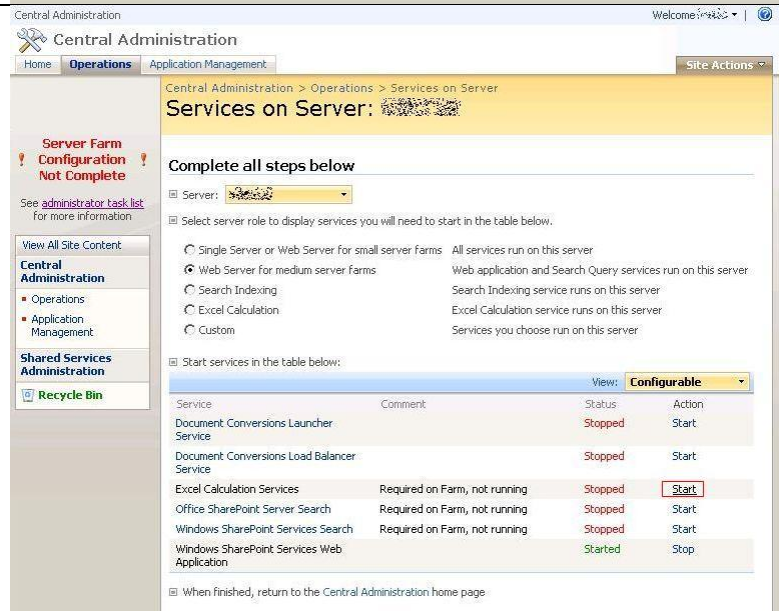
In this case we have to start all services on the same server, the current server.



Click "Start" behind the "Excel Calculation Services". The service will be started.

**Start services**

- Excel Calculation Service
- Office Sharepoint Search Server
- Windows Sharepoint Service Search



The component “Excel Calculation Services” has started. Now click “Start” behind the “Office SharePoint Server Search” component.

Central Administration > Operations > Services on Server

**Services on Server:**

Complete all steps below

Server: [Server Name]

Select server role to display services you will need to start in the table below.

Single Server or Web Server for small server farms All services run on this server  
 Web Server for medium server farms Web application and Search Query services run on this server  
 Search Indexing Search Indexing service runs on this server  
 Excel Calculation Excel Calculation service runs on this server  
 Custom Services you choose run on this server

Start services in the table below:

Service	Comment	Status	Action
Document Conversions Launcher Service		Stopped	Start
Document Conversions Load Balancer Service		Stopped	Start
<b>Excel Calculation Services</b>			
Office SharePoint Server Search	Required on Farm, not running	Stopped	Start
Windows SharePoint Services Search	Required on Farm, not running	Stopped	Start
Windows SharePoint Services Web Application		Started	Stop

When finished, return to the Central Administration home page

This component has to be configured before it is able to start.

Central Administration > Operations > Services on Server > Office SharePoint Server Search Service Settings

**Configure Office SharePoint Server Search Service Settings on server**

Use this page to configure Office SharePoint Server Search Service Settings.

Warning: this page is not encrypted for secure communication. User names, passwords, and any other information will be sent in clear text. For more information, contact your administrator.

**Query and Indexing**

Use this option to specify if you want to use this server for search queries or indexing or both.

Use this server for indexing content  
 Use this server for serving search queries

**Contact E-mail Address**

Specify an e-mail address that external site administrators can contact if problems arise when their site is being crawled. This setting applies to all servers in the farm.

E-mail Address: [Input Field]

Example: someone@example.com  
This is a required field. You must enter a value to continue.

**Farm Search Service Account**

The search service will run using this account. Setting or changing this account affects all index and query servers in the server farm.

The Farm search service account must not be a built-in account for security reasons and for it to access the database and content index. Examples of built-in accounts are Local Service and Network Service.

User name: [Input Field] (Missing user name.)  
Password: [Input Field]



Enter the following information:

**Query and Indexing:**

- Select "Use this server for indexing content"
- Select "User this server for serving search queries"

**Contact E-mail Address:**

- Enter a administrator e-mail address.

**Farm Search Service Account:**

- Enter domain\sa\_MOSS2007Search as account.
- Enter the configured password in the password field.

**Index Server Default File Location:**

- Leave default

**Indexer Performance:**

- Leave default

**Web Front End And Crawling:**

- Leave default

Click "Start"

The component "Office SharePoint Server Search" has started. Now click "Start" behind the "Windows SharePoint Services Search" component.

Service	Comment	Status	Action
Document Conversions Launcher Service		Stopped	Start
Document Conversions Load Balancer Service		Stopped	Start
Excel Calculation Services		Started	Stop
Office SharePoint Server Search		Started	Stop
Windows SharePoint Services Search	Required on Farm, not running	Stopped	Start
Windows SharePoint Services Web Application		Started	Stop

This component has to be configured before it is able to start.

Enter the following information:

**Service Account:**

- Enter domain\sa\_MOSS2007Search as account.
- Enter the configured password in the password field.

**Content Access Account:**

- Enter domain\sa\_MOSS2007Crawl as account.
- Enter the configured password in the password field.

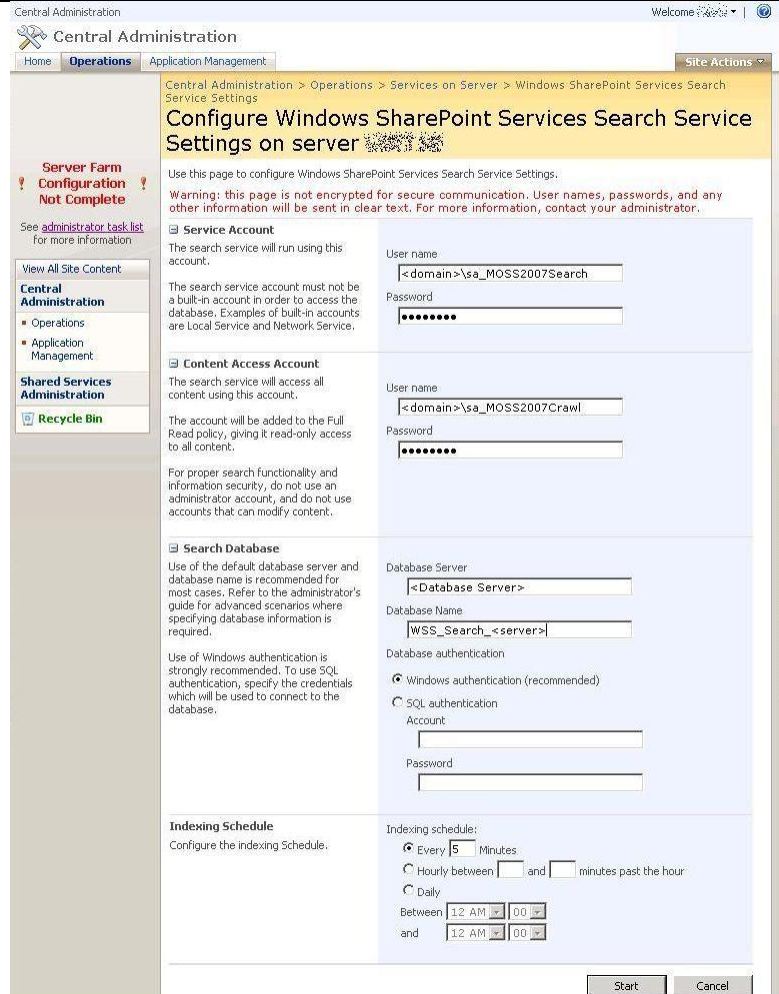
**Search Database:**

- Enter the database server (probably automatically entered correctly)
- Enter the database name (probably automatically entered correctly).

**Indexing Schedule:**

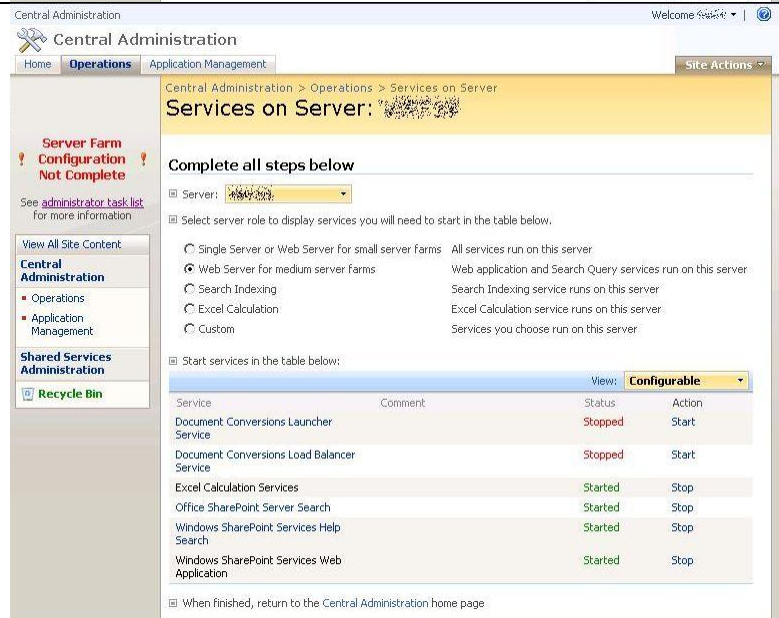
- Leave default

Click "Start"



All services are started correctly.

Click "Home"





Select the next task "Configure server farm's shared services"

Central Administration

Home Operations Application Management Site Actions

**Server Farm Configuration Not Complete**

See [administrator task list](#) for more information

View All Site Content

**Central Administration**

- Operations
- Application Management

**Shared Services Administration**

- Recycle Bin

**Administrator Tasks**

Order	Title	Assigned To	Status
1	READ FIRST - Click this link for deployment instructions	NEW	Not Started
1	Initial deployment: Add servers to farm	NEW	Not Started
1	Initial deployment: Assign services to servers	NEW	Not Started
1	Configure server farm's shared services	NEW	Not Started

Add new task

**Farm Topology**

**Server Services Running**

- Central Administration
- Excel Calculation Services
- Office SharePoint Server Search
- Windows SharePoint Services Database
- Windows SharePoint Services Help Search
- Windows SharePoint Services Incoming E-Mail
- Windows SharePoint Services Web Application

**Resources**

There are currently no favorite links to display. To add a new link, click "Add new link" below.

Add new link

Click the link behind "Action" to start the task.

Central Administration

Home Operations Application Management Site Actions

Central Administration > Administrator Tasks > Configure server farm's shared services

**Administrator Tasks: Configure server farm's shared services**

Close

New Item Edit Item Delete Item Manage Permissions Alert Me

**Title** Configure server farm's shared services

**Action** [Configure server farm's shared services](#)

**Description**

This is a **required** task to complete your deployment configuration. Office SharePoint Server includes a key set of services that are shared across web applications. By default, these services are shared across all sites within the server farm. Click the Action link to go to the **New Shared Services Provider** page and supply the following.

1. Name and path to create an administration site from which these services will be managed.
2. Credentials for web service communication and a timer service.
3. SQL server and database names for the databases used by these services.

The ability to create additional sets of shared services can be found under the central administration Application Management tab.

**Order** 1

**Status** Not Started

**Assigned To**

**Associated Service**

**System Task** Yes

**% Complete**

Click "Create a new Web application" to create a web application for the Shared Services.

The screenshot shows the Central Administration console for Office SharePoint Server 2007. The breadcrumb trail is: Central Administration > Application Management > Manage this Farm's Shared Services > New Shared Services Provider. The page title is "New Shared Services Provider".

On the left side, there is a navigation pane with the following sections:

- Server Farm Configuration Not Complete (with a warning icon)
- See administrator task list for more information.
- View All Site Content
- Central Administration
  - Operations
  - Application Management
- Shared Services Administration
  - Recycle Bin

The main content area contains the following information:

- A warning message: "Warning: this page is not encrypted for secure communication. User names, passwords, and any other information will be sent in clear text. For more information, contact your administrator." with OK and Cancel buttons.
- SSP Name**: Specify a unique, descriptive name for this Shared Services Provider. This name will be used to identify this SSP in administration pages. The input field contains "SharedServices1".
- Web application**: A dropdown menu with a "Create a new Web application" link highlighted in a red box.
- SSP Administration Site URL**: A text input field.
- Additional text: "A Web application is required for the SSP administration site. Select an existing Web application from the list or click 'Create a new Web application'." and "Note: For server farm installations, the selected Web application cannot have an application pool that uses Network Service as its process account."
- Bottom text: "Users will be able to navigate to the SSP administration site by typing this Web site address (URL) into their browsers."

Enter the following information:

**IIS Web Site:**

- Select "Create a new IIS web site"
- Description: "shareservices.domain.nl"
- Port: "80"
- Host Header: "shareservices.domain.nl"

**Security Configuration:**

- Authentication provider: "NTLM"
- Allow Anonymous: "No"
- Use Secure Socket Layer: "No"

**Load Balanced URL:**

- URL: http://shareservices.domain.nl:80

**Application Pool:**

- Select "Create new application pool"
- Application pool name: Leave default
- Username: "domain\sa\_MOSS2007SSPWebApp"
- Password: Enter the configured password in the password field.

**Reset Internet Information Services:**

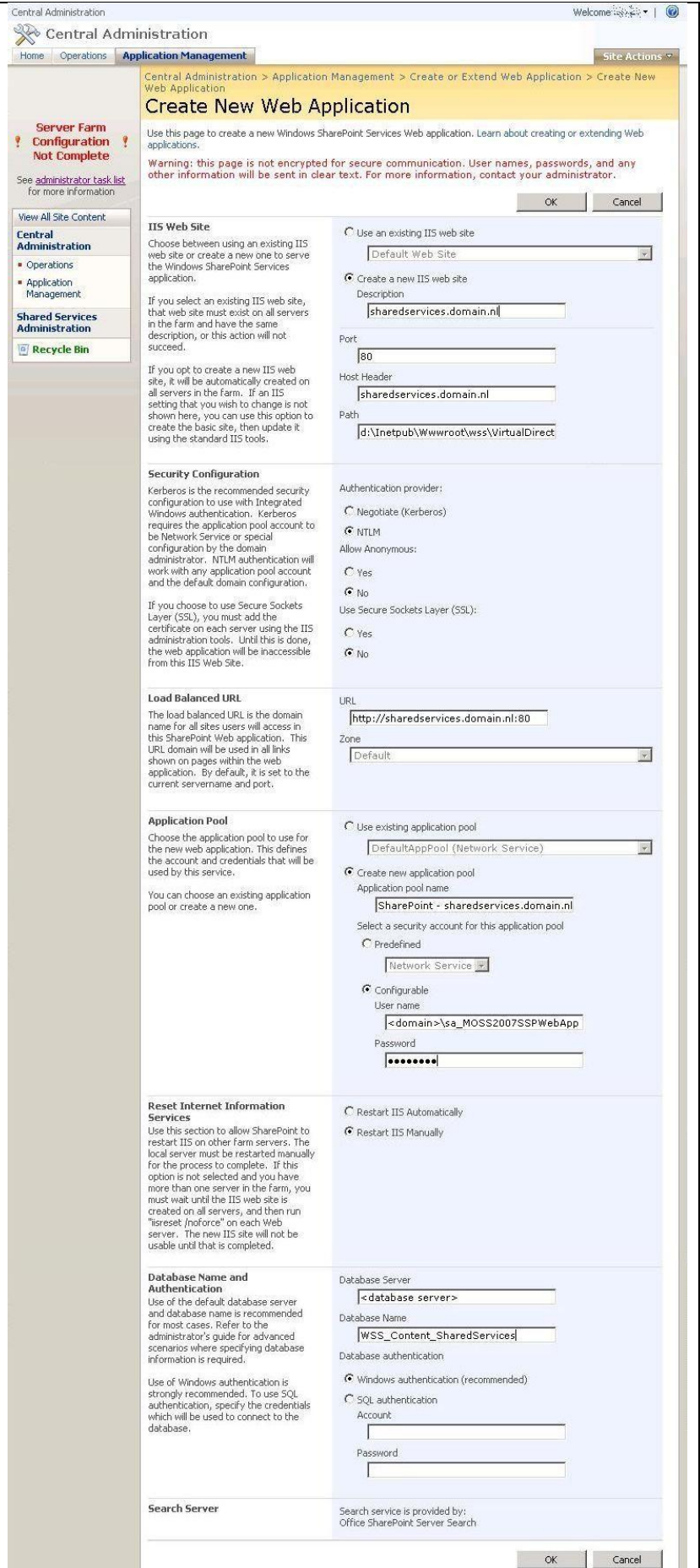
- Select "Restart IIS Manually"

**Database Name and Authentication:**

- Database server: Enter the database server (probably automatically entered correctly)
- Database Name: Add "\_SharedServices" to the default name.

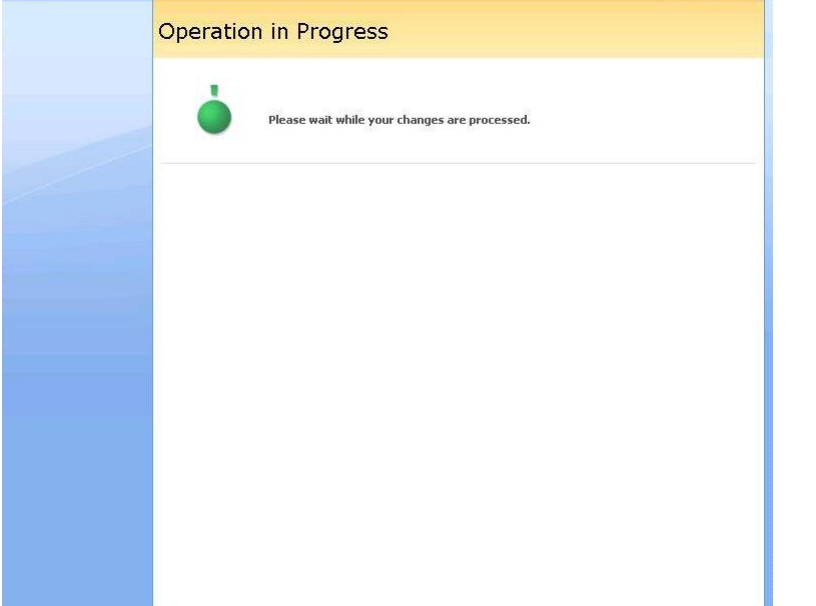
Click "OK"

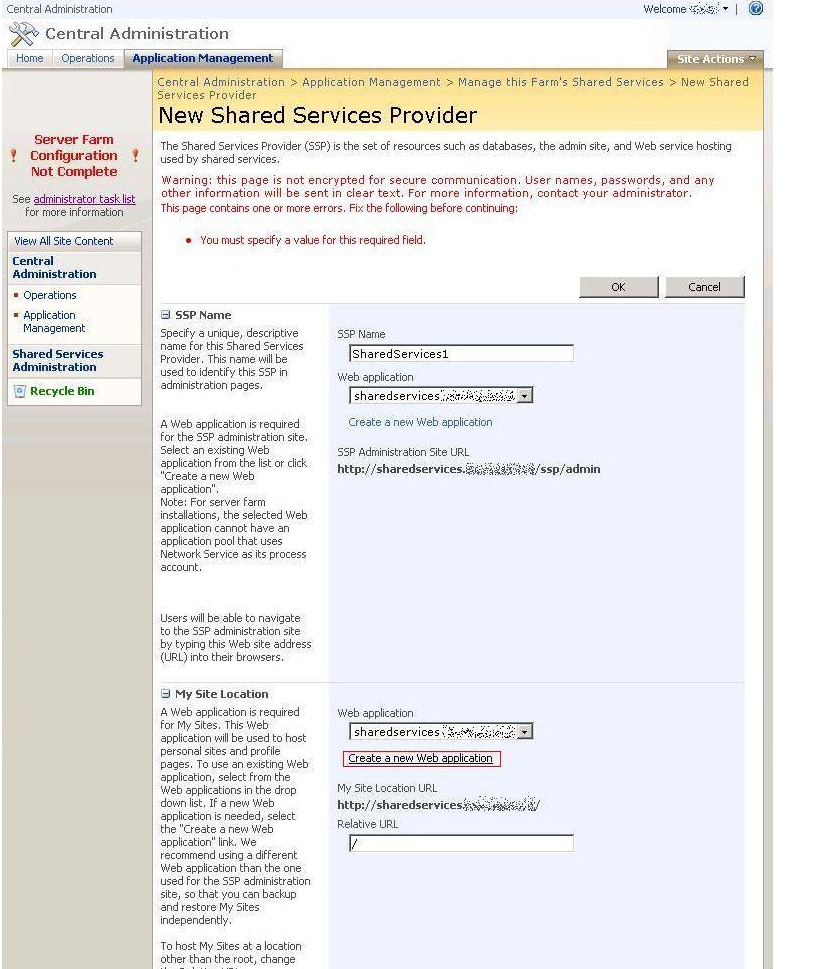
**NOTE:** Use your own domain name instead of domain.nl



The screenshot shows the 'Create New Web Application' page in Central Administration. The page is divided into several sections:

- IIS Web Site:** The 'Create a new IIS web site' radio button is selected. The description is 'shareservices.domain.nl', the port is '80', and the host header is 'shareservices.domain.nl'. The path is 'd:\inetpub\wwwroot\wss\VirtualDirect'.
- Security Configuration:** The 'NTLM' authentication provider is selected. 'Allow Anonymous' is set to 'No' and 'Use Secure Sockets Layer (SSL)' is also set to 'No'.
- Load Balanced URL:** The URL is 'http://shareservices.domain.nl:80' and the zone is 'Default'.
- Application Pool:** The 'Create new application pool' radio button is selected. The application pool name is 'SharePoint - shareservices.domain.nl'. The security account is 'Configurable' with the user name '<domain>\sa\_MOSS2007SSPWebApp' and a password field.
- Reset Internet Information Services:** The 'Restart IIS Manually' radio button is selected.
- Database Name and Authentication:** The 'Database Server' is '<database server>', the 'Database Name' is 'WSS\_Content\_SharedServices', and 'Database authentication' is set to 'Windows authentication (recommended)'. The 'SQL authentication' section is collapsed.
- Search Server:** The search service is provided by 'Office SharePoint Server Search'.

<p>The web application will be created.</p>	
---	--

<p>Scroll down and click "Create a new Web application" under "My Site Location"</p>	
--	---



Enter the following information:

**IIS Web Site:**

- Select "Create a new IIS web site"
- Description: "mysite.domain.nl"
- Port: "80"
- Host Header: "mysite.domain.nl"

**Security Configuration:**

- Authentication provider: "NTLM"
- Allow Anonymous: "No"
- Use Secure Socket Layer: "No"

**Load Balanced URL:**

- URL: http://mysite.domain.nl:80

**Application Pool:**

- Select "Create new application pool"
- Application pool name: Leave default
- Username: "domain\sam\_MOSS2007WebApp"
- Password: Enter the configured password in the password field.

**Reset Internet Information Services:**

- Select "Restart IIS Manually"

**Database Name and Authentication:**

- Database server: Enter the database server (probably automatically entered correctly)
- Database Name: Add "\_MySite" to the default name.

Click "OK"

**NOTE:** Use your own domain name instead of domain.nl

The web application will be created.

Operation in Progress



Please wait while your changes are processed.

Enter the following information:

**SSP Name:**

- SSP Name: "SharedServices"
- Web application: "shareservices.domain.nl"

**My Site Location:**

- Web Application: "mysite.domain.nl"
- Relative URL: "/"

**SSP Service Credentials:**

- Username: "domain\sa\_MOSS2007SSP"
- Password: Enter the configured password in the password field.

**SSP Database:**

- Database server: Enter the database server (probably automatically entered correctly)
- Database Name: "SharedServices\_DB" (remove "1")

**Search Database:**

- Database server: Enter the database server (probably automatically entered correctly)
- Database Name: "SharedServices\_Search\_DB" (remove "1")

**Index Server:**

- Index Server: Leave default
- Path for index file location: Leave default

**SSL for Web Services:**

- Use Secure Sockets Layer: "No"

Central Administration > Application Management > Manage this Farm's Shared Services > New Shared Services Provider

**New Shared Services Provider**

The Shared Services Provider (SSP) is the set of resources such as databases, the admin site, and Web service hosting used by shared services.

Warning: this page is not encrypted for secure communication. User names, passwords, and any other information will be sent in clear text. For more information, contact your administrator. This page contains one or more errors. Fix the following before continuing:

- You must specify a value for this required field.

**SSP Name**  
Specify a unique, descriptive name for this Shared Services Provider. This name will be used to identify this SSP in administration pages.

SSP Name: SharedServices

Web application: shareservices

SSP Administration Site URL: http://shareservices/spp/admin

**My Site Location**  
A Web application is required for My Sites. This Web application will be used to host personal sites and profile pages. To use an existing Web application, select from the Web applications in the drop down list. If a new Web application is needed, select the "Create a new Web application" link. We recommend using a different Web application than the one used for the SSP administration site, so that you can backup and restore My Sites independently.

Web application: mysite

My Site Location URL: http://mysite/

Relative URL: /

**SSP Service Credentials**  
Specify the credentials for the SSP Web services to use for inter-server communication and for running SSP-scoped timer jobs.

Username: Service Account MOSS2007 SSP

Password: [masked]

**SSP Database**  
Each SSP requires a database for service-specific data.

Use of the default database server and database name is recommended for most cases. Refer to the Office SharePoint Server TechCenter on TechNet for advanced scenarios where specifying database information is required.

Database Server: <database server>

Database Name: SharedServices\_DB

Database authentication: Windows authentication (recommended)

**Search Database**  
In addition to the SSP database, a separate database is required for frequently changing search-related data.

Use of the default database server and database name is recommended for most cases. Refer to the Office SharePoint Server TechCenter on TechNet for advanced scenarios where specifying database information is required.

Database Server: <database server>

Database Name: SharedServices\_Search\_DB

Database authentication: Windows authentication (recommended)

**Index Server**  
Select the index server which will crawl content in all Web applications associated with this SSP.

Specify the path on the index server where the indexes will be located.

Note: Changing the index server will reset the index. To move the index without a reset STSAdm must be used.

Index Server: [default]

Path for index file location: D:\Program Files\Microsoft Office Serv

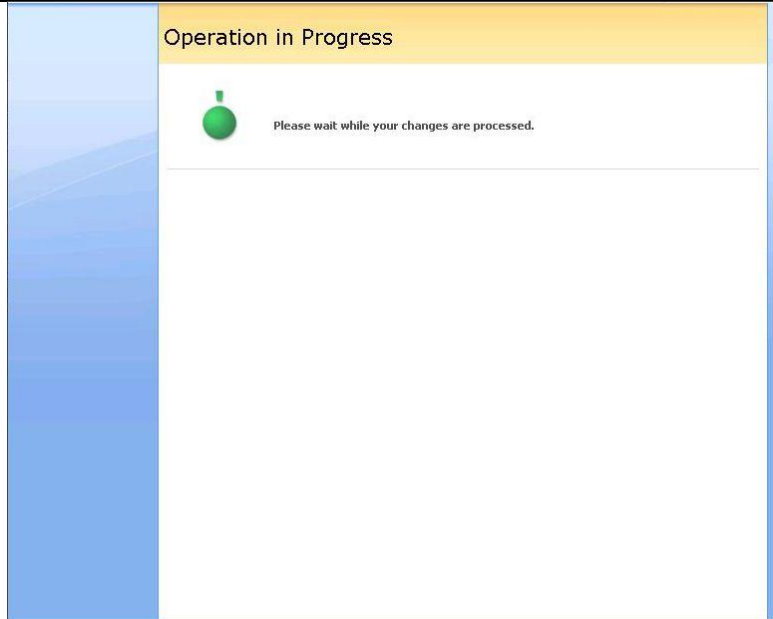
**SSL for Web Services**  
Use Secure Sockets Layer (SSL) to protect communications to and from Web services.

Note: If you choose to use SSL, you must add the certificate on each server using the IIS administration tool. Until this is done, the Web services will not be available.

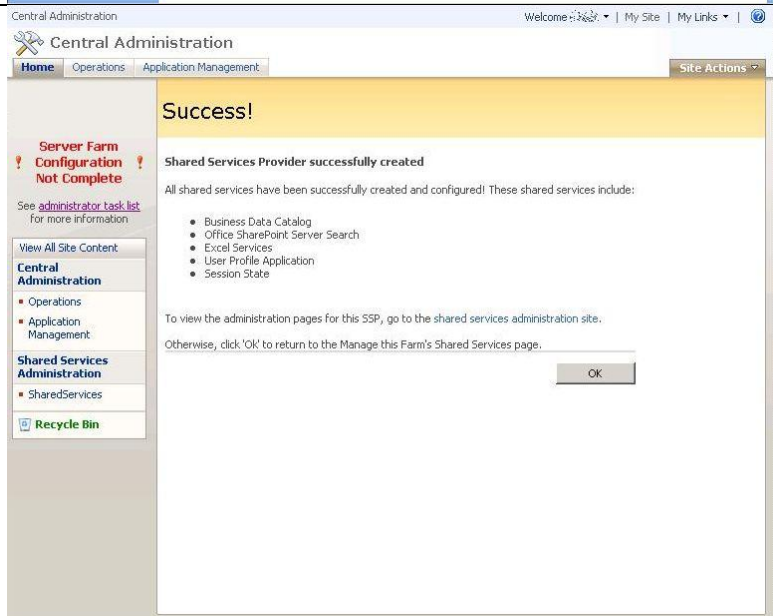
Use Secure Sockets Layer (SSL): No



The Shared Services Provider will be created.

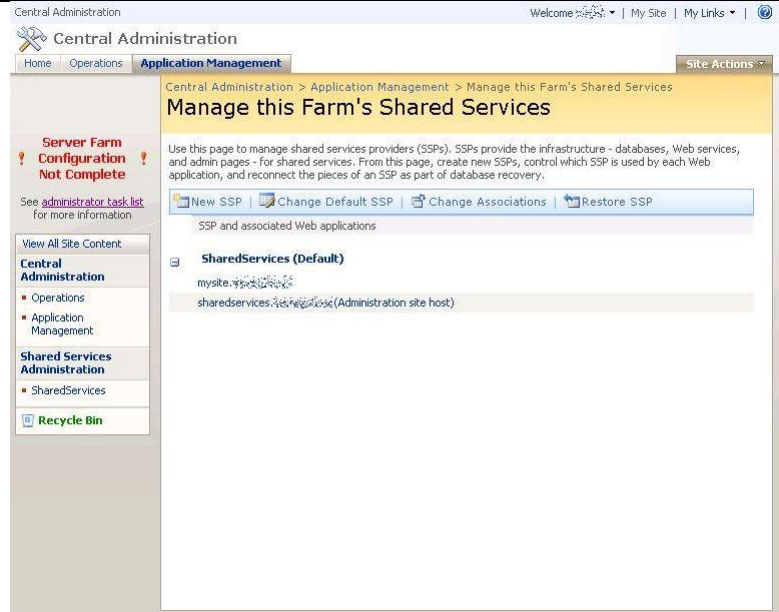


The Shared Services Provider has been created successfully. Click "OK"



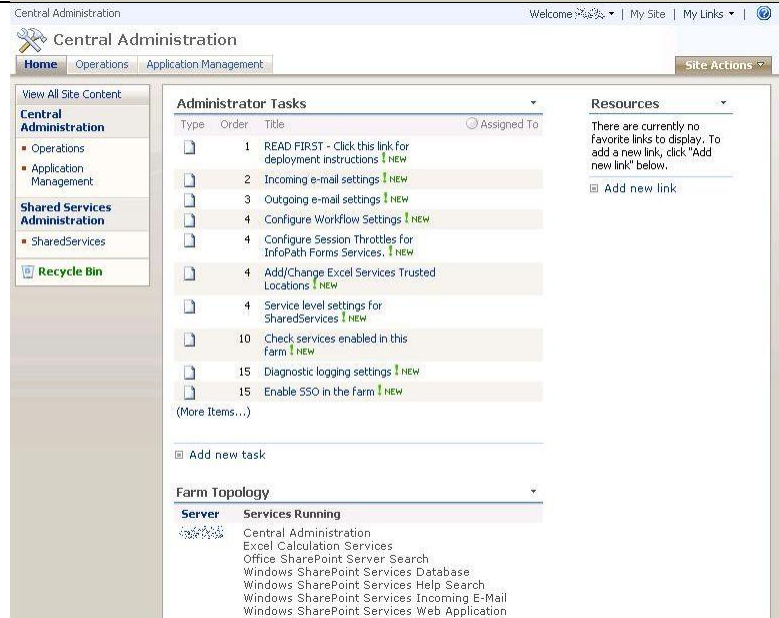
The Shared Services are being displayed.

Click "Home"

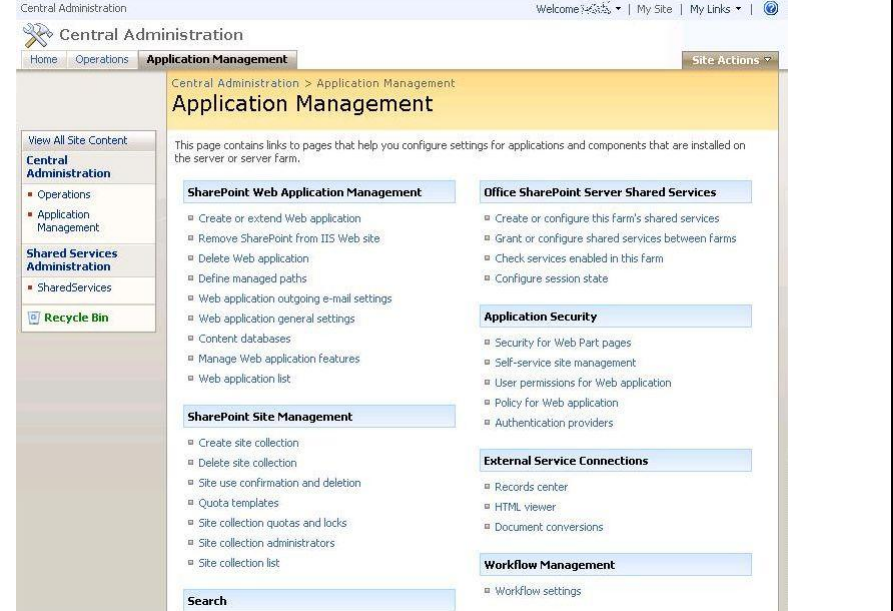
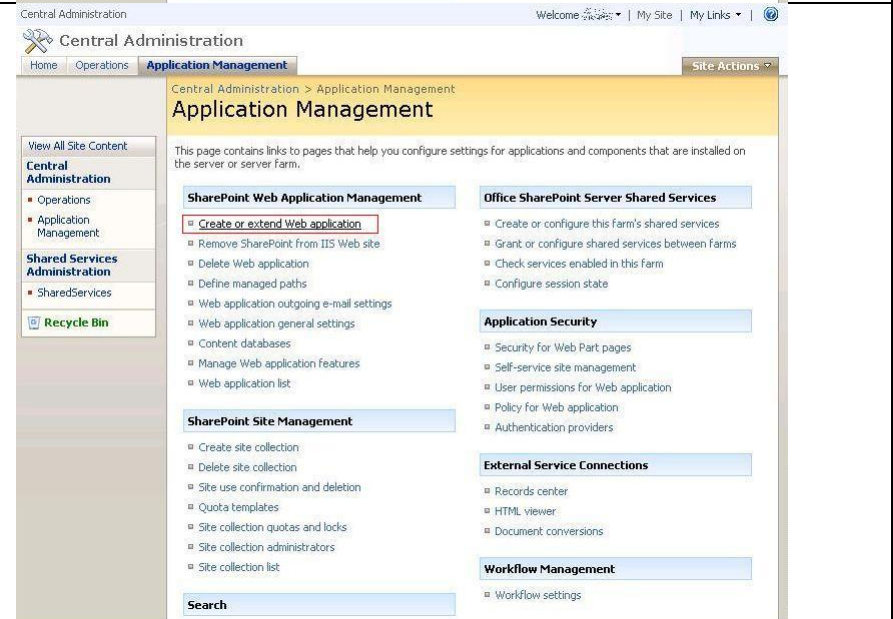


The default tasks are removed and new tasks are added. These tasks are not required for operation.

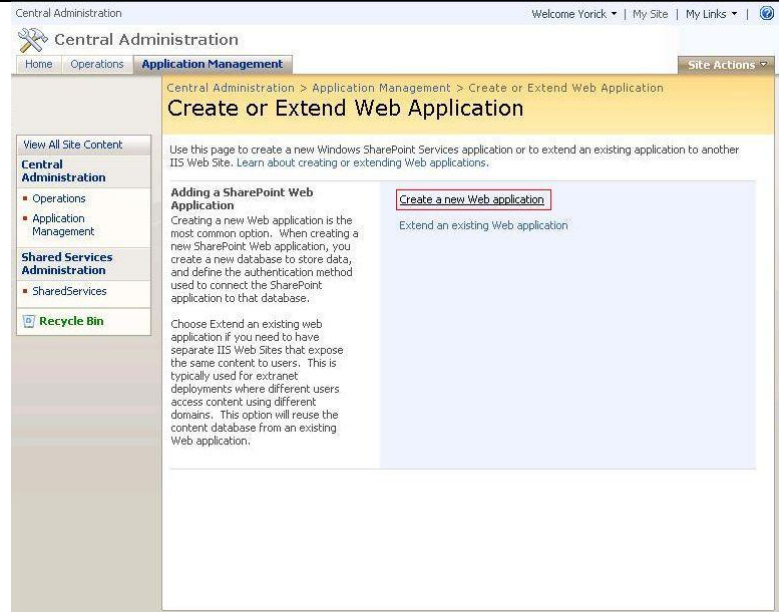
One task is important: "Outgoing e-mail settings". Without configuring this setting, alerts will not work.



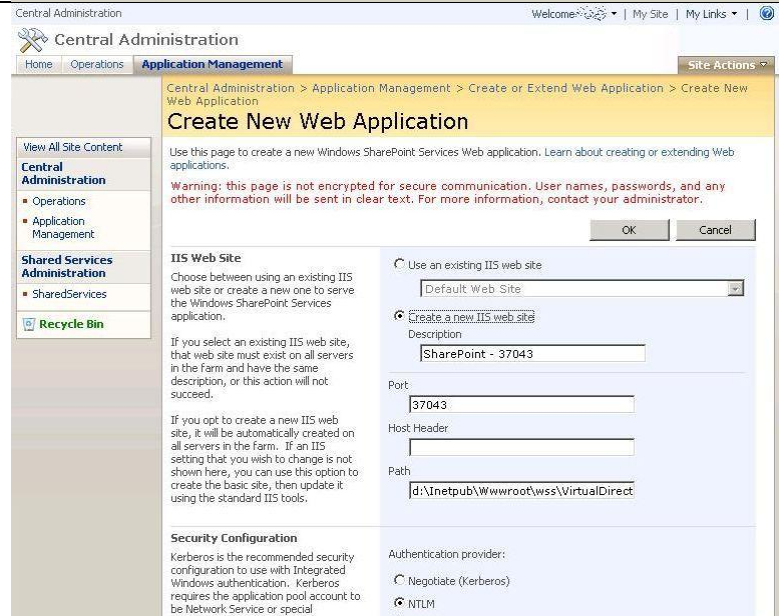
## Step 10: Create web application for portal

Step	
<p>Click "Application Management"</p>	 <p>The screenshot shows the 'Application Management' page in Central Administration. The left-hand navigation pane is expanded to show 'Application Management' under 'Central Administration'. The main content area contains several sections: 'SharePoint Web Application Management', 'Office SharePoint Server Shared Services', 'SharePoint Site Management', 'Application Security', 'External Service Connections', and 'Workflow Management'. Each section contains a list of tasks with checkboxes.</p>
<p>Click "Create or extend Web application"</p>	 <p>This screenshot is identical to the one above, but the link 'Create or extend Web application' in the 'SharePoint Web Application Management' section is highlighted with a red rectangular box, indicating the next step in the process.</p>

Click "Create a new Web Application"



The page for a new Web Application is shown.





Enter the following information:

**IIS Web Site:**

- Select "Create a new IIS web site"
- Description: "portal.domain.nl"
- Port: "80"
- Host Header: "portal.domain.nl"

**Security Configuration:**

- Authentication provider: "NTLM"
- Allow Anonymous: "No"
- Use Secure Socket Layer: "No"

**Load Balanced URL:**

- URL: http://portal.domain.nl:80

**Application Pool:**

- Select "Create new application pool"
- Application pool name: Leave default
- Username: "domain\s\_a\_MOSS2007WebApp"
- Password: Enter the configured password in the password field.

**Reset Internet Information Services:**

- Select "Restart IIS Manually"

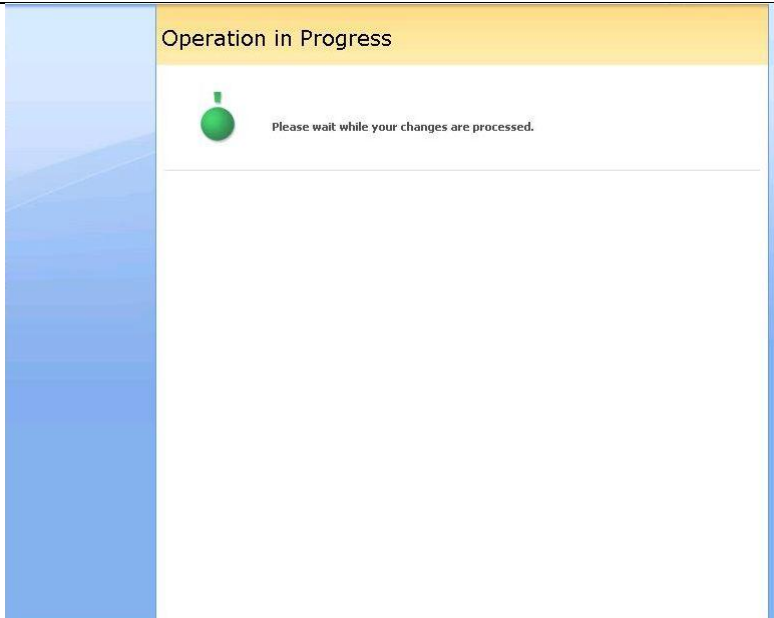
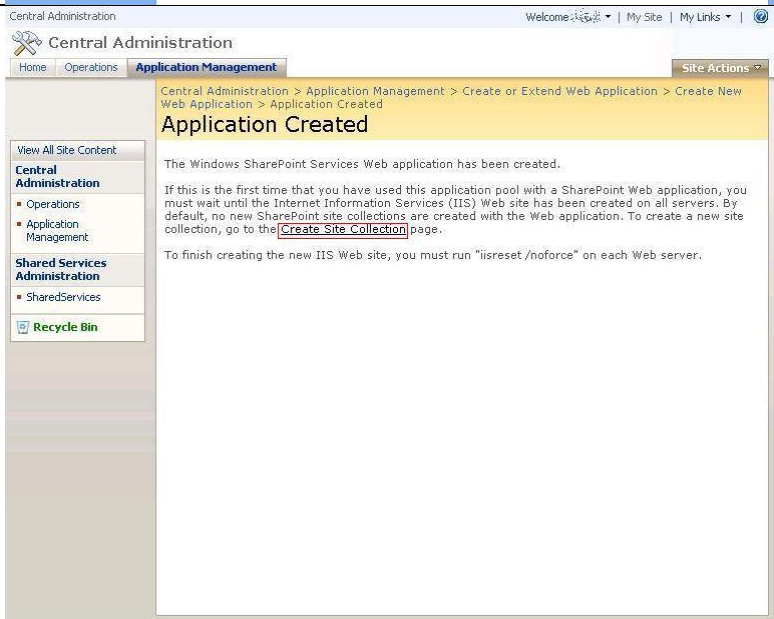
**Database Name and Authentication:**

- Database server: Enter the database server (probably automatically entered correctly)
- Database Name: Add "\_Portal" to the default name.

Click "OK"

**NOTE:** Use your own domain name instead of domain.nl



<p>The web application will be created.</p>	
<p>The web application has been created.</p> <p>Click "Create Site Collection" to create a site collection in the web application.</p>	

Enter the following information:

**Web Application:**

- Choose "http://portal.domain.nl"

**Title and Description:**

- Title: "Portal"
- Description: Enter if necessary.

**Web Site Address:**

- Choose root "/"

**Template Selection:**

- Tab: "Publishing"
- Template: "Collaboration Portal"

**Primary Site Collection Administrator:**

- User name: "Administrator"

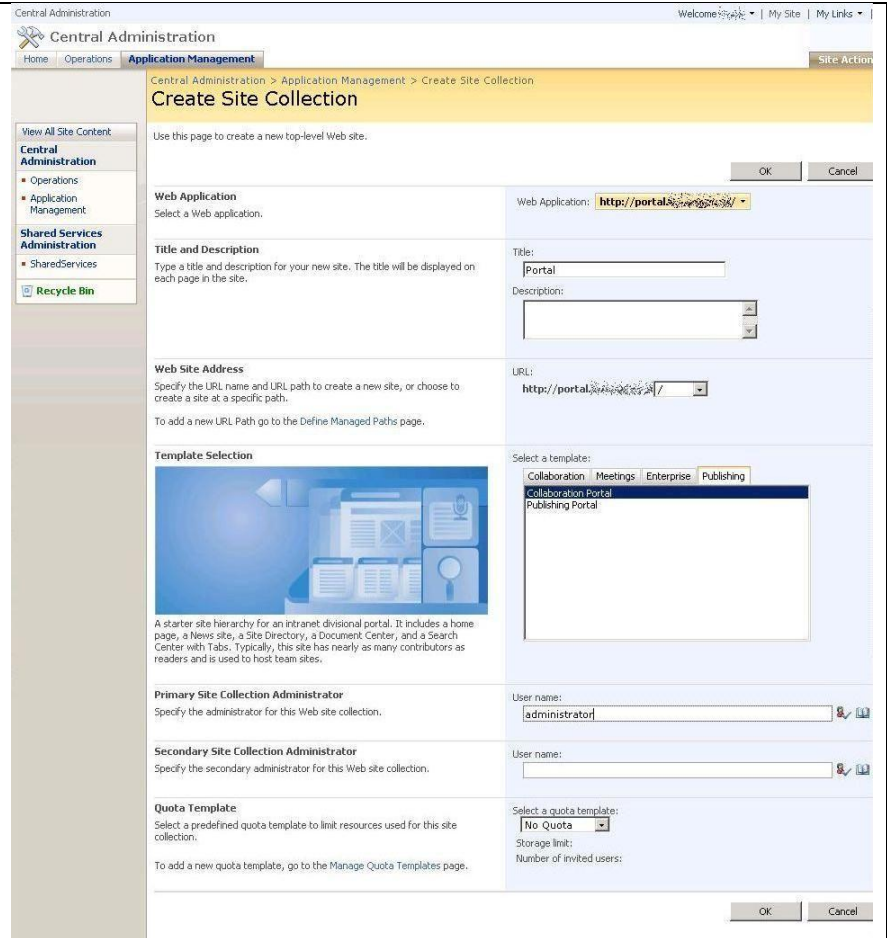
**Secondary Site Collection Administrator:**

- User name: If desired.

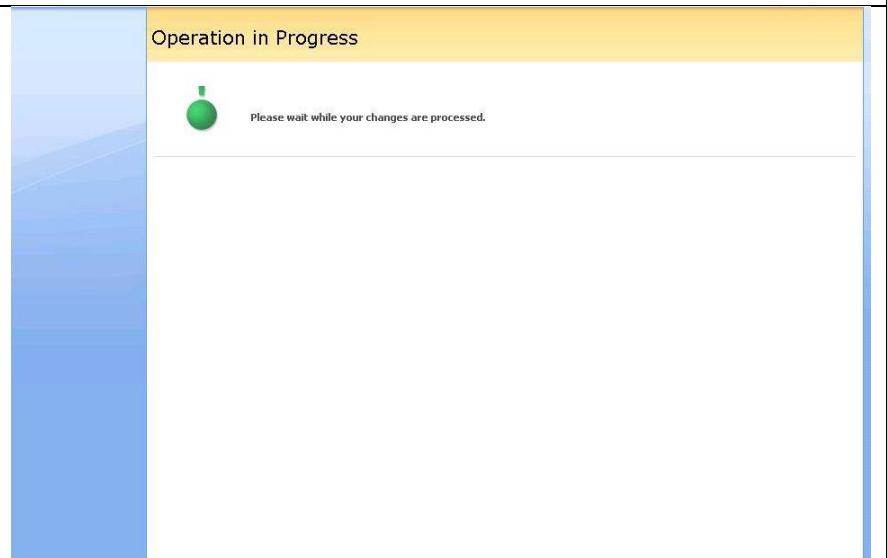
**Quota Template:**

- Quota template: Leave default

Click "OK"

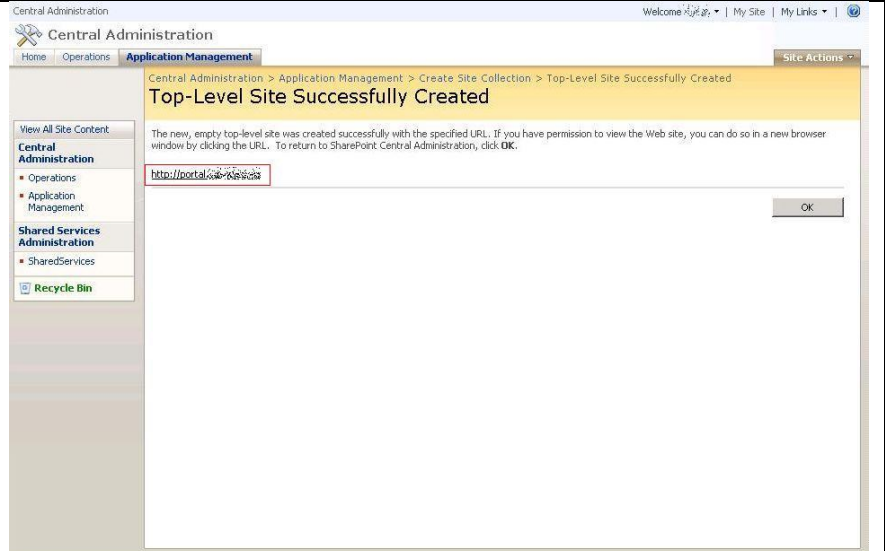


The site collection will be created.



The site collection has been created.

Click the link to open the portal.



You have looking at the portal you have just created!!



If you like to create a web application especially for team sites, create another web application by performing step 10 once more. Only this time using teamsite.<domain> instead of portal.<domain>.

### Step 11: Install .NET Framework patches

Step	
Request the hotfixes using the following site: <a href="http://support.microsoft.com/gp/CUHotFix_LandingPage_Request">http://support.microsoft.com/gp/CUHotFix_LandingPage_Request</a>	
KB923028 - Fixes issue with Timer service KB918642 - Fixes issue with errors in Eventlog	
You are mailed the download locations and extraction passwords. Download the files and extract the patches using the passwords.	
Install both patches. The KB918642 requires a reboot. Start with the KB923028, so you only have to restart once.	

## Step 12: Install Public Update of October 9th

Step	
<p>Download the public update of October 9<sup>th</sup> 2007</p> <p>Details: WSS 3.0 <a href="http://support.microsoft.com/kb/934525/">http://support.microsoft.com/kb/934525/</a></p> <p>MOSS 2007 <a href="http://support.microsoft.com/kb/937832/">http://support.microsoft.com/kb/937832/</a></p>	<p>WSS 3.0 - DOWNLOADS KB934525 - Security Update for WSSv3: 32 bit: <a href="http://www.microsoft.com/downloads/info.aspx?na=22&amp;p=2&amp;SrcDisplayLang=en&amp;SrcCategoryId=&amp;SrcFamilyId=&amp;u=%2fdownloads%2fdetails.aspx%3fFamilyID%3d76fc2225-2802-46e5-a294-a842e3841877%26DisplayLang%3den">http://www.microsoft.com/downloads/info.aspx?na=22&amp;p=2&amp;SrcDisplayLang=en&amp;SrcCategoryId=&amp;SrcFamilyId=&amp;u=%2fdownloads%2fdetails.aspx%3fFamilyID%3d76fc2225-2802-46e5-a294-a842e3841877%26DisplayLang%3den</a></p> <p>64 bit: <a href="http://www.microsoft.com/downloads/info.aspx?na=22&amp;p=1&amp;SrcDisplayLang=en&amp;SrcCategoryId=&amp;SrcFamilyId=&amp;u=%2fdownloads%2fdetails.aspx%3fFamilyID%3d667335dd-df2e-4f14-a130-5758701be055%26DisplayLang%3den">http://www.microsoft.com/downloads/info.aspx?na=22&amp;p=1&amp;SrcDisplayLang=en&amp;SrcCategoryId=&amp;SrcFamilyId=&amp;u=%2fdownloads%2fdetails.aspx%3fFamilyID%3d667335dd-df2e-4f14-a130-5758701be055%26DisplayLang%3den</a></p> <p>MOSS 2007 - DOWNLOADS KB937832 -Security Update for MOSS2007: 32 bit: <a href="http://www.microsoft.com/downloads/info.aspx?na=22&amp;p=2&amp;SrcDisplayLang=en&amp;SrcCategoryId=&amp;SrcFamilyId=&amp;u=%2fdownloads%2fdetails.aspx%3fFamilyID%3daaea9695-f541-4c4c-9107-81ead5cfc8c9%26DisplayLang%3den">http://www.microsoft.com/downloads/info.aspx?na=22&amp;p=2&amp;SrcDisplayLang=en&amp;SrcCategoryId=&amp;SrcFamilyId=&amp;u=%2fdownloads%2fdetails.aspx%3fFamilyID%3daaea9695-f541-4c4c-9107-81ead5cfc8c9%26DisplayLang%3den</a></p> <p>64 bit: <a href="http://www.microsoft.com/downloads/info.aspx?na=22&amp;p=1&amp;SrcDisplayLang=en&amp;SrcCategoryId=&amp;SrcFamilyId=&amp;u=%2fdownloads%2fdetails.aspx%3fFamilyID%3d1d319164-d133-4493-be27-1aead62362c4%26DisplayLang%3den">http://www.microsoft.com/downloads/info.aspx?na=22&amp;p=1&amp;SrcDisplayLang=en&amp;SrcCategoryId=&amp;SrcFamilyId=&amp;u=%2fdownloads%2fdetails.aspx%3fFamilyID%3d1d319164-d133-4493-be27-1aead62362c4%26DisplayLang%3den</a></p>
<p>Install the updates on each SharePoint server. Start with the WSS update.</p> <p>Reboot the server after installation.</p>	
<p>After the reboot, run the Configuration Wizard.</p> <p>Start &gt; Programs &gt; Microsoft Office Servers &gt; Configuration Wizard</p>	<p>This might generate an error at step 8. Wait until configuration is finished (might take a while).</p>

## Step 13: Configure PDF icon

Step	
<p>Download the PDF icon from <a href="http://share-point.blogspot.com/2007/05/moss2007-configure-sharepoint-2007-to.html">http://share-point.blogspot.com/2007/05/moss2007-configure-sharepoint-2007-to.html</a></p>	
<p>Copy the PDF icon to C:\Program Files\Common Files\Microsoft Shared\Web Server Extensions\12\Template\Images</p>	
<p>Add "&lt;mapping key='pdf' value='icpdf.gif'" to the file docicon.xml which can be found in: C:\Program Files\Common Files\Microsoft Shared\Web Server Extensions\12\Template\XML</p>	
<p>Run an IISReset</p>	

## Step 14: Install PDF iFilter and configure indexed file types

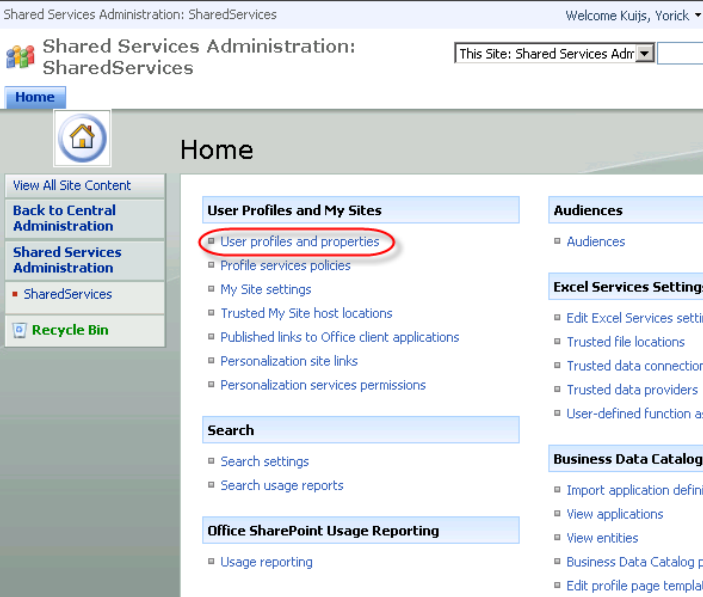
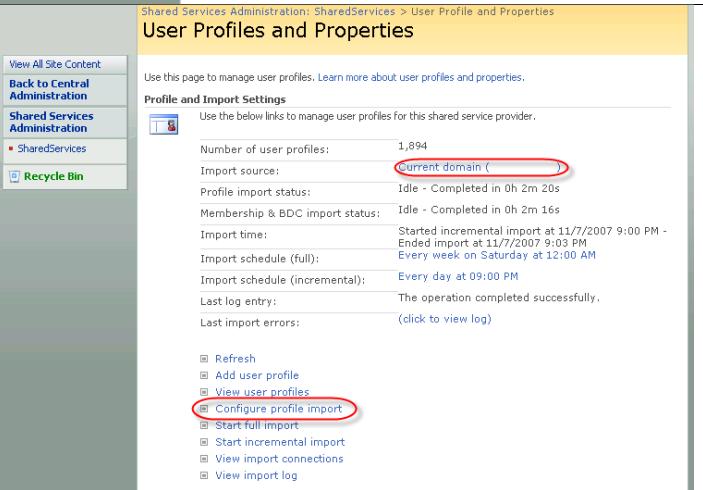
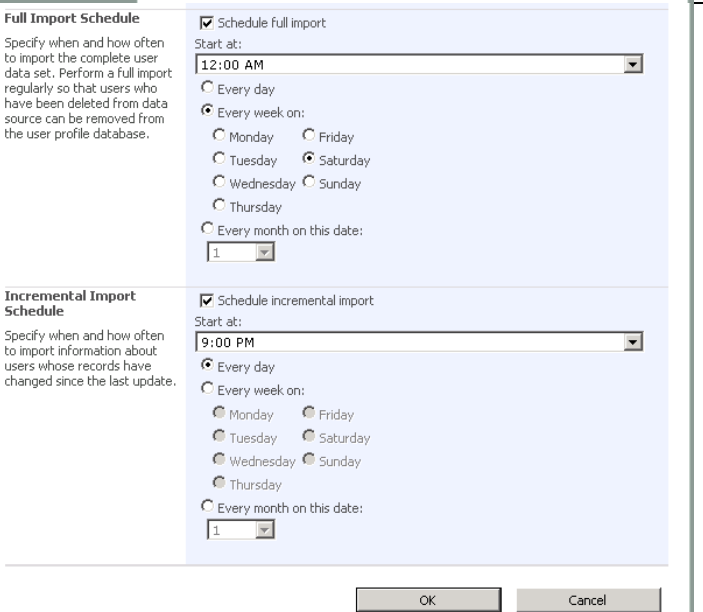
Step	
Download the PDF iFilter from <a href="http://www.foxitsoftware.com/pdf/ifilter/">http://www.foxitsoftware.com/pdf/ifilter/</a>	
<b>NOTE:</b> The only company that is supplying a 64 bit PDF iFilter is Fox IT.	
Install the iFilter by running the downloaded MSI package	
Add PDF to the indexed file types: <ul style="list-style-type: none"> <li>- Shared Services &gt; Search Settings &gt; File Types</li> <li>- Click "New File Type"</li> <li>- Enter "pdf" and click "OK"</li> </ul>	

## Step 15: Grant service accounts permissions to DCOM objects

Step	
Open the Knowledge Base article KB920783 and perform the mentioned steps.  This will prevent DCOM errors (Event ID 10017) from appearing in the event log.	<a href="http://support.microsoft.com/kb/920783">http://support.microsoft.com/kb/920783</a>
<ol style="list-style-type: none"> <li>1.) Click Start, click Run, type dcomcnfg in the Open box, and then click OK.</li> <li>2.) Expand Component Services, expand Computers, expand My Computer, and then click DCOM Config.</li> <li>3.) Right-click IIS WAMREG admin Service, and then click Properties.</li> <li>4.) Click the Security tab.</li> <li>5.) Under Launch and Activation Permissions, click Edit.</li> <li>6.) In the Launch Permission dialog box, click Add.</li> <li>7.) In the Select Users, Computers, or Groups dialog box, type the WSS_WPG and WSS_ADMIN_WPG groups, click Check Names, and then click OK.</li> <li>8.) In the Permissions for UserName list, click to select the Allow check box that is next to Local Activation, and then click OK two times.</li> </ol>	
<b>This issue has been fixed in the Public Update of October 9<sup>th</sup>. Unfortunately a new issue has been introduced which can be fixed:</b>	
Perform the same steps mentioned above for the OSearch and SPSearch DCOM components.	More info: <a href="http://share-point.blogspot.com/2007/11/mosswsv3-bug-in-sharepoint-public.html">http://share-point.blogspot.com/2007/11/mosswsv3-bug-in-sharepoint-public.html</a>



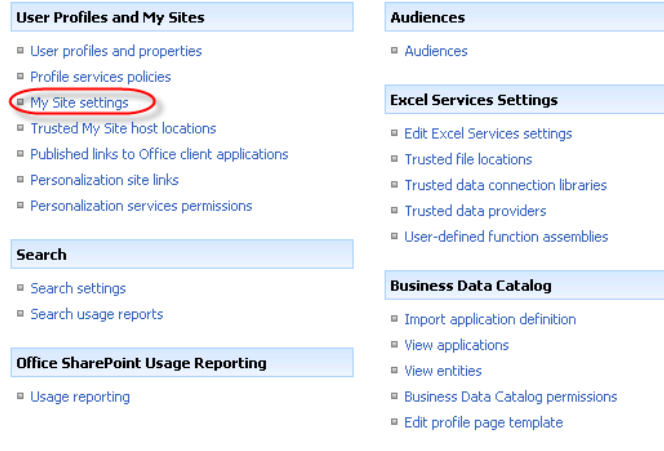

## Step 16: Configure profile import schedule

Step	
<p>When an Active Directory is present, it is possible to import user data into the SharePoint profile database. This data will be used in the users MySites.</p> <p>To configure the profile import, go to the Shared Services Page at <a href="http://shardservices.domain.nl">http://shardservices.domain.nl</a> and click "User profiles and properties".</p>	
<p>Verify that your current domain has been selected by checking the name after "Current domain (&lt;domain&gt;)". &lt;domain&gt; should list your domain.</p> <p>Click "Configure profile import"</p>	
<p>Scroll down, select the checkbox "Schedule full import" and enter an appropriate time. Do the same for the Incremental Import.</p> <p>Click "OK"</p>	

## Step 17: Configure indexing schedule

Step	
<p>Open the Shared Services at <a href="http://shareservices.domain.nl">http://shareservices.domain.nl</a> and click "Search settings"</p>	
<p>Open the Content Sources by clicking "1 defined (Local Office SharePoint Server sites)"</p>	
<p>Hover over the "Local Office SharePoint Server sites" item and click the yellow arrow on the right to open the menu.</p> <p>Select menu item "Edit"</p>	
<p>Scroll down to the "Crawl Schedules" section and click "Create Schedule" under "Full Crawl" to create a new schedule.</p>	
<p>Select the desired schedule and click "OK"</p>	
<p>Do the same for the Incremental Crawl and click "OK" afterwards. Content will be crawled according to the specified schedule.</p>	

## Step 18: Change MySite settings

Step	
<p>Open the Shared Services at <a href="http://shareservices.domain.nl">http://shareservices.domain.nl</a> and click “My Site Settings”</p>	
<p>Scroll down and select “Domain and user name (will not have conflicts)” at the “Site Naming Format”.</p> <p>Click “OK”.</p>	

## Step 19: Windows Update

Step	
<p>Run a “Microsoft Update” and install all missing patches.</p>	<p><a href="http://update.microsoft.com">http://update.microsoft.com</a></p>